

# the Wheelagram



Materials Cleaning Systems Division  
**Wheelabrator-Frye Inc.**

VOL. I NO. 17  
AUGUST 12, 1977

## HAYNES RECEIVES SCHOLARSHIP AWARD . . .



A check from the Scholarship Foundation of St. Joseph County was presented to Donald Haynes (center) by his sponsor, Ray Leliaert (l.). Harold Schulte, Wheelabrator Scholarship Committee Chairman, is on the right. (Wheelabrator is one of many local industries contributing to the Scholarship Foundation.) Don, who spent his summer as a Draftsman in our Engineering Department, will enter his sophomore year in Electrical Engineering, Purdue University, this fall.

## AFS LABORATORY DEDICATED . . .

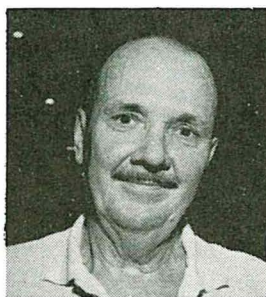


Brown Sanders, Industry Manager-Foundry and Carter Dreves, Manager of Public Relations were in Des Plaines, Illinois recently to attend the dedication ceremonies of the Frank S. Ryan Memorial Laboratory. Located at the American Foundrymen's Society Technical Center, the laboratory will augment the Cast Metals Institute program of instruction for operating foundrymen. (l. to r.) Jack Hansen, West Central Regional Manager; George Goodrich, Director, CMI; Ashley Sinnett, AFS Executive Vice President; Brown and Carter. In the background is the 48-inch Swing Table donated by Wheelabrator for use in the foundry training program.

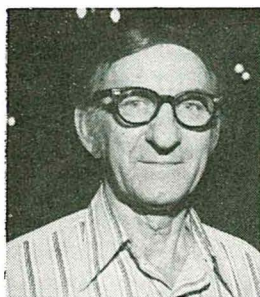
## ANNIVERSARY TIME FOR . . .



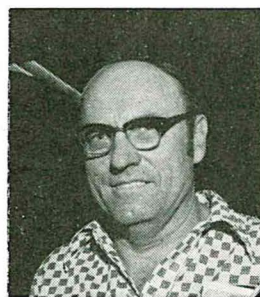
**JEAN R. SEYBOLD**  
Secretary-Engineering  
40 years



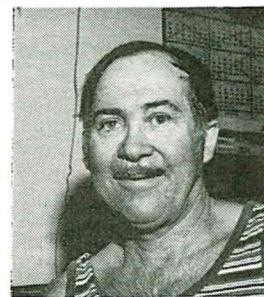
**CHAS. E. RONDOT**  
Shot Machine Operator-Plant 2  
30 years



**JOHN B. KIJEK**  
Production Control Supervisor  
25 years



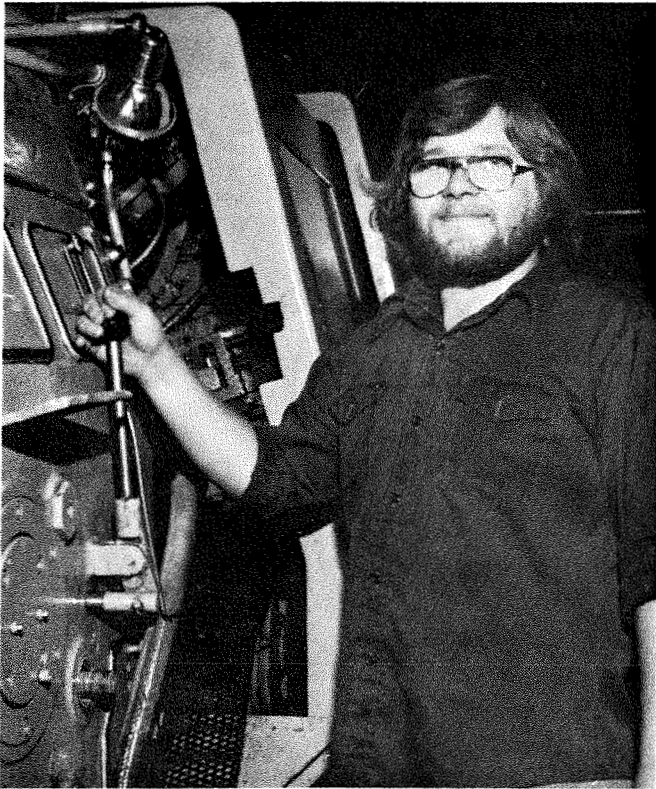
**ROBERT J. BAKER**  
Foreman, Balcrank Buff & Polish  
25 years



**DANIEL B. MALONEY, JR.**  
Inspector-Inspection  
25 years

AND, 15 years for ROBERT T. WATTS, Arc Welder-Steel Shop; RICHARD L. BARNER, Assembler A-Assembly; SHIRLEY G. WESTON, Assembler AA-Assembly; EVERETTE E. BUSS, Assembler A-Assembly; ROBERT E. ASHBURN, Foreman-Melting Abrasive, Plant 2; EDDIE J. BALLARD, Electric Melt Furnace Operator, Plant 2; FRANK C. WILLEKENS, Packager, Plant 2; RUSSELL GOLDEN, Assembler A-Assembly; 10 years for WILLIAM R. FRIES, Lab Technician-Demonstration; DENNIS C. JOHNSON, Field Engineer-Sales; ADDISON L. BROWN, Field Engineer-Sales; and JAMES D. FLOWERS, Maintenance Electrician-Maintenance Plant 1. HAPPY ANNIVERSARY!

ON THE JOB . . .



THOMAS DECOOK, an Automatic Screw Machine Trainee in the Machine Shop has four years of company service. Born in West Germany, Tom grew up in South Bend and is a graduate of Riley High School. A member of Wheelabrator's Trap Club, Tom is a fishing and bowling enthusiast and is currently in the process of rebuilding an old Triumph motorcycle. He told us, thanks to the inspiration of his wife, he also enjoys working around the house. Tom and his wife, Candy, reside in Mishawaka and are parents of a 21-month-old son, Timmy.

ON THE SPORTS SCENE . . .

**DAWN GOLF LEAGUE** — August 8 — Rained out!

**Dawn Golf League Outing** — Sunday, September 11, Brookwood Golf Course, with tee times starting at 8:00 A.M. (Indiana time). If you have your foursome set, or need to be placed in a group, contact Mike Hillebrand (288-3463) or Tom VanDeWalle (ext. 224). **ENTRY DEADLINE — SEPTEMBER 6.**

**TWILIGHT GOLF LEAGUE** — August 1 and 3 results — Gerry Griffin in with both Low Individual Scratch-34 and Low Individual Net-32. Way to go, Ger!

**Twilight Golf League Outing** — Saturday, September 17. Golf at Swan Lake — Hog Roast afterwards at the Amer-

ican Legion, Lakeville. See Larry Baker for reservations — \$10 for members; \$15 for guests.

**RAY DONOVAN**, Sales Manager-Balcrank Jet Pulser Systems, has been elected Vice-Chairman, Coolant Fed Tooling Committee, Society of Manufacturing Engineers. The function of the committee is to seek out and disseminate the design and application of coolant feed tooling systems. The Society of Manufacturing Engineers (SME) is an international society with over 47,000 members.

**TEMPER** is what gets most of us into trouble. Pride is what keeps us there.

**PROMOTIONS . . . JERRY ANKNEY** has been promoted from Cost Accountant to Tax Manager — congratulations, Jerry!

**NEW FACES . . .** Welcome to **ANNA E. BARILICH**, Shop Secretary-Fabrication; **RODERICK V. SAWYER**, Sr. Engineer-Engineering; **CAROL L. HARRIS**, Customer Order/Service Clerk-Balcrank; and **LEO R. MAHONEY**, Engineer-Engineering.

**A LOT OF MUSCLE . . .** Well, we tried. We told the office grouch that it takes 72 muscles to frown and only 18 to smile and he snarled, "I never said I was lazy!"

**FORECAST . . .** E.A.'s last report before returning to college (we'll miss you!) — chance of showers and thunder-showers both days; little change in temperature; some sun at times, but brief — certainly not a weekend for the outdoor types!

**WHEELAGRAM AND MISHAWAKA PLANT TAKE A HOLIDAY . . .** During the weeks of August 15 and 22 the plant will be closed for summer vacation shutdown. **BE SURE** to check your distribution rack Thursday, September 1 for your next issue of *Wheelagram*.

Published weekly by and for employees of Materials Cleaning Systems Division.

Wheelabrator-Frye Inc.  
400 South Byrkit Avenue  
Mishawaka, Indiana 46544

Del Tenney, Editor ..... Ext. 397