

the Wheelagram



Materials Cleaning Systems Division
Wheelabrator-Frye Inc.

VOL. II NO. 15

APRIL 21, 1978

A SPECTACULAR SHOWCASE . . . The 82nd American Foundrymen's Casting Congress and Exposition will be held April 24-28 at Detroit's Cobo Hall. Over 18,000 foundrymen are expected to attend.

The Foundry Show enables Wheelabrator to show her "wares" to more potential customers during a five day period than is possible over many months of calls by our sales force. Members of the Mishawaka staff and field service force will be on deck throughout the week to offer our products and services to the foundry industry.

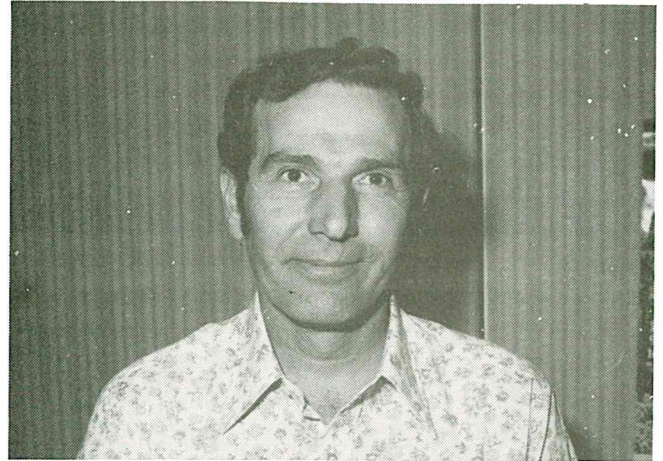
The central feature of our exhibit will be the most massive, environmentally-designed casting cleaning and sand reclamation system at the show — WFI's SandSaver.® This particular system will be delivered to Ductile Iron Company of America, Savannah, Georgia, and combines a Wheelabrator 96" Swing Table blast machine and a Sand Reclamation module. The SandSaver makes it possible for a foundry to demold and clean castings in one dust-controlled operation and to reclaim the molding and core sand for reuse.

Based upon a process we pioneered in the early 1960's, the machine on display is capable of cleaning castings and mechanically reclaiming 20 tons of sand each hour.

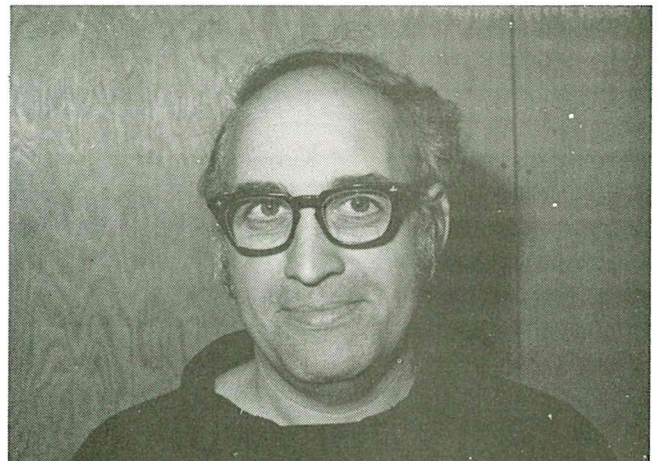


GUIDED BY WFI engineers Tom Burmeister and Dave Hanson, students from the Technical Drafting Course, Elkhart Career Center, toured our facility last Friday. Our own co-op students **Mike Moyer** and **George Schuller** are enrolled in this course.

CONGRATULATIONS TO . . .



JOHN M. TEETERS, Chief Expeditor-Balcrank Production Control, who celebrated 25 years of company service April 2.



ARTHUR R. SELLENBERG, Senior Metallurgical Control Lab Technician-Plant 2, who celebrated his silver anniversary Monday, AND **JOHN F. LEYES**, Erie Press-Steel Shop, who celebrates his tenth anniversary tomorrow.

CONGRATULATIONS TO Alex Webb recently named General Manager of the Precision Finishing Products Division.

LEST WE FORGET . . . NATIONAL SECRETARIES WEEK APRIL 24-28.

NEW FACES . . . **Stan L. LaBancz** has been appointed to the position of Product Manager-Sand Reclamation. Stan comes to us from the Quaker Oats Company, Chemicals Division, Chicago, where he served as Foundry Applications Engineer, developing and implementing programs for foundries and engineering consultants to show the advantages of the No-Bake Molding Process. Welcome aboard!

WFI CREDIT UNION NEWS . . . Due to the heavy increase in weekly deductions from Credit Union payroll accounts, it is **once again** necessary to enforce the ruling of **one withdrawal per month per member** from their Credit Union savings account.

WFI EMPLOYEES TO DISPLAY THEIR CREATIVE WORK . . . Employees interested in exhibiting their original works of art — from oils to sculpture and hobby crafts — will have the opportunity to bring their work to the Main Lobby, Monday, May 22, between the hours of 6:45 A.M. and 8:30 A.M. Catalog cards are available from **Marcia Batten**, Engineering (ext. 432) and **Carol Harris**, R & D (ext. 477). These cards will be used as identification of the art and artist at the time of display.

Beautiful young people are accidents of nature; beautiful old people planned it that way.

THE SUBJECT IS . . . **John Burlingame**, Vice President-Marketing, last night addressed a joint meeting of the American Marketing Association and Planning Executives Institute (Michiana Chapter) on "Capital Goods Marketing."

ATHLETIC ASSOCIATION "employees only" STAG Saturday, April 29, BK Club, Mishawaka. Donation \$1.00.

JULIANNA JABBER . . . Annual fund-raising card party next Thursday, 7:30 P.M., Queen of Peace, Mishawaka. **You haven't bought your ticket yet???** Check bulletin board for name of ticket rep in your area. Lots and lots of neat prizes (we've been peeking)!

There is but one way to be kind. There are countless ways not to.

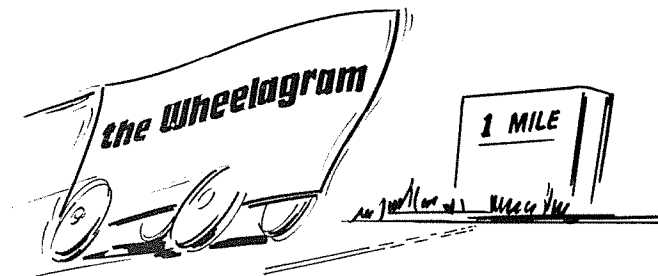
WITH APRIL 15 behind us we offer the following (with apologies to A. Lincoln):

LET THERE BE TAXES AND DEDUCTIONS, BUT . . . Some score and odd years ago, the politicians brought forth upon this land the income tax, conceived in desperation and dedicated to the proposition that all employees appreciate deductions.

Now, new politicians are engaged in a great debate, testing whether employees so dedicated can long endure further deductions. But in a larger sense, we cannot pay more, we cannot give more. We brave employees who struggle with paychecks have given our all. There is little left from which to subtract.

The politicians will little note, nor long remember what is said here, but they must never forget our anguish and torture. In the legal sense, we cannot avoid; we cannot evade; we cannot cheat; we dare not underestimate the tax. For collectors, computer-clever, have gone far beyond our powers to figure.

It is for us, then, the taxpayers, to devote ourselves to tax returns with our last full measure of savings that we here highly resolve that our money not be spent in vain, that next year will not find us in too high an income tax bracket, and that high taxation of the people, by the politicians, for questionable purposes shall finally perish from our land.



A MILESTONE — WHEELAGRAM 1 YEAR OLD TOMORROW! A great **BIG thank you** to everyone here in the home office and in the field for the cooperation, comments and suggestions you extended to the editor this past year.

Published weekly by and for employees of Materials Cleaning Systems Division.

Wheelabrator-Frye Inc.
400 South Byrkit Avenue
Mishawaka, Indiana 46544

Del Tenney, Editor Ext. 397