

# the Wheelagram



Materials Cleaning Systems Division  
**Wheelabrator-Frye Inc.**

VOL. II NO. 33

SEPTEMBER 8, 1978

## What is a BUSINESS?

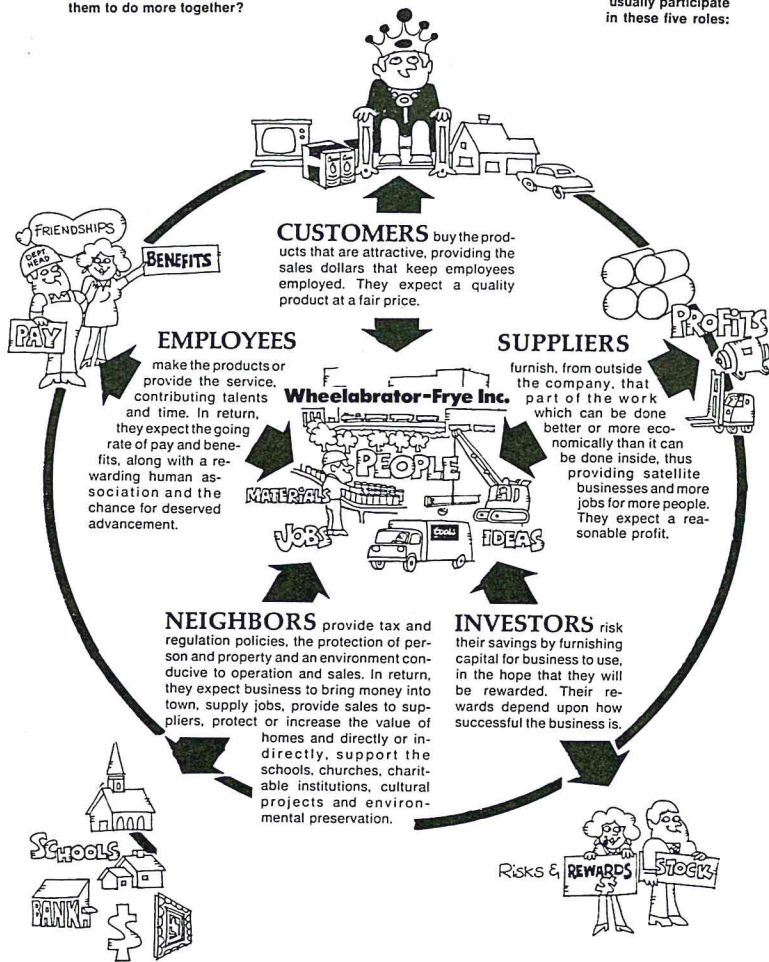
Is a business — an it, or a thing, or money, or goods, or buildings or machinery?

NO. Business is people, the many who come together voluntarily to do things for each other that they can't do working alone.

What makes it possible for them to do more together?

Investors and managers make it possible to pool resources and share ideas, designs, materials, facilities, etc.

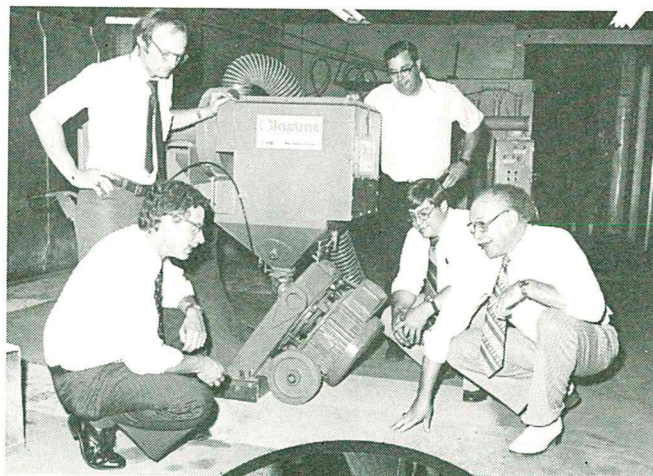
People, working together, reap their rewards according to their contribution, on a something-for-something basis. They usually participate in these five roles:



You, the employee, play many roles. It is possible to be a customer, investor and a neighbor at the same time. In any category, you make business possible.

AVERAGE EMPLOYEES do only what is required of them. Top employees do that — and a little bit more.

THIS IS THE WAY WE CLEAN OUR FLOORS . . .

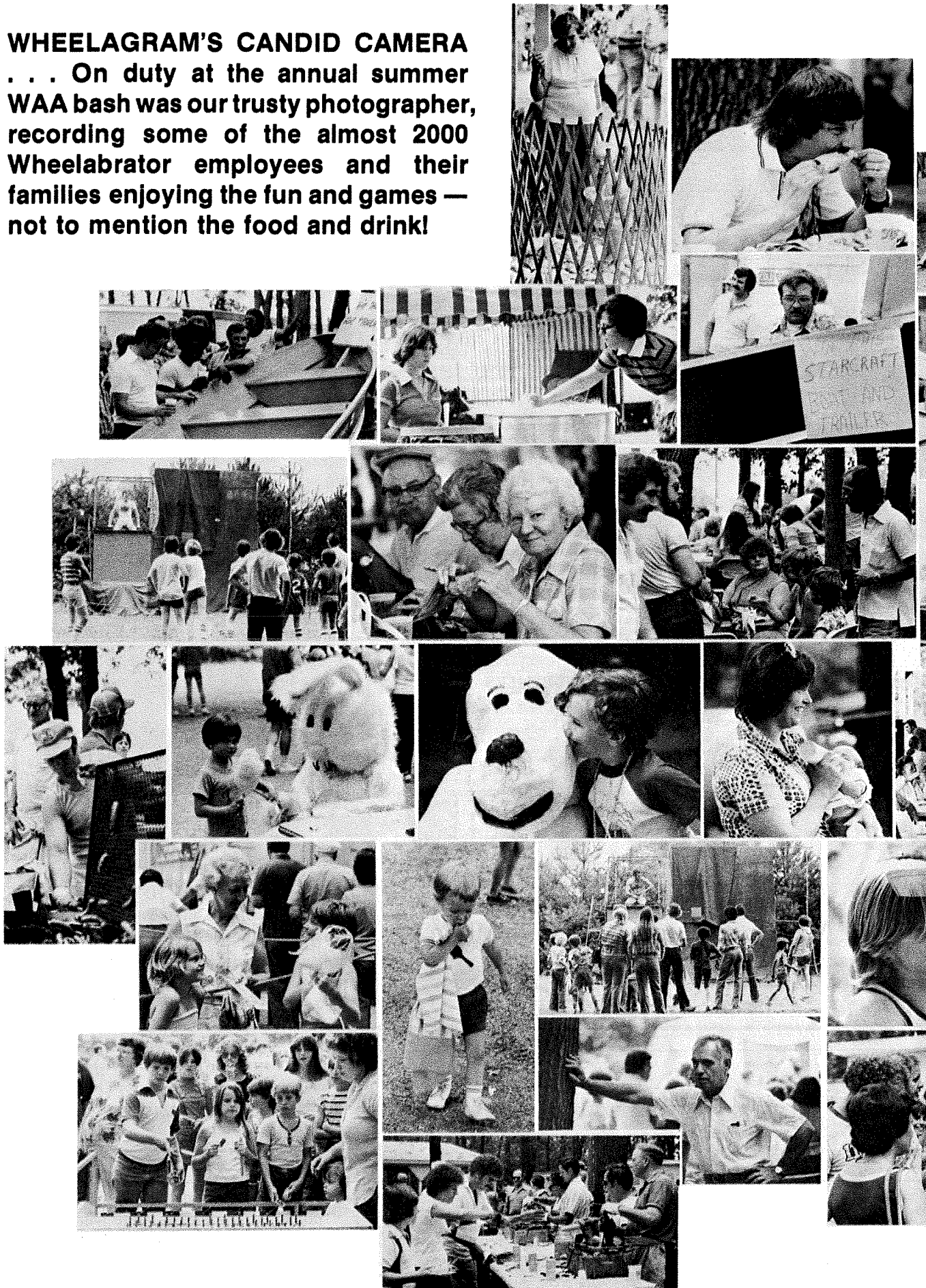


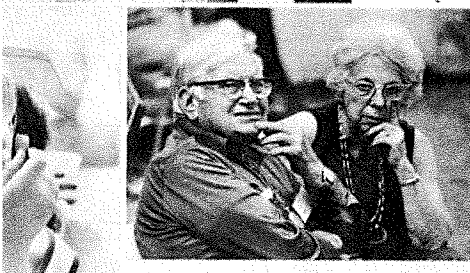
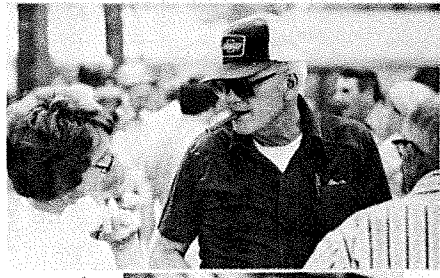
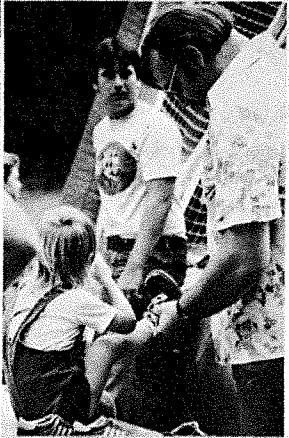
Product Development's JOHN BERGH (r) points out the merits of our portable blast cleaner "Blastrac" during an actual cleaning session in our foundry. Our 1 20-D Blastrac, manned by BILL BERGER (second from right), Blastrac Service Center Coordinator, efficiently and effectively removed the buildup of binder which is sprayed on cores prior to entering the oven. In some areas there was as much as a one-half inch accumulation of the binder. Properly impressed are (from left) OTTO WALTERS, Regional Manager-Rust Chimney Division, DICK ZELMER, Assistant Superintendent-Foundry and LEON LINDSEY, Foreman-Foundry.

CALLING ALL JA ADVISORS and those interested in becoming advisors to a Wheelabrator sponsored company: There will be a JA Orientation Monday, September 11, 3:30 P.M., R & D basement conference room. Plan to attend!



**WHEELAGRAM'S CANDID CAMERA**  
... On duty at the annual summer  
WAA bash was our trusty photographer,  
recording some of the almost 2000  
Wheelabrator employees and their  
families enjoying the fun and games —  
not to mention the food and drink!





**CREDIT UNION ANNOUNCES NEW SERVICES . . .**

The WFI Employees Federal Credit Union is now offering to its members a Vacation Club. This service is in addition to the Savings and Christmas Club accounts. Registration will be accepted at the Credit Union Office (R & D building) through September 15. The Vacation Club will run from July 1 to July 1, starting in 1979.

Anyone not a Credit Union member, but interested in the Vacation Club may join the Credit Union and open a Vacation Club also. **New members are always welcome.**

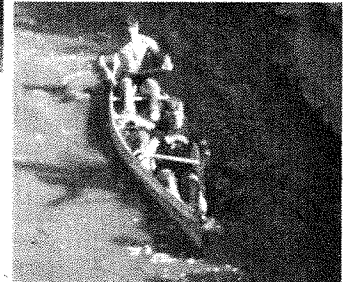
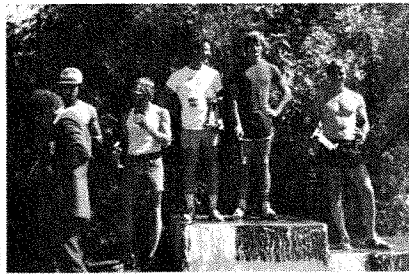
**CELEBRATING COMPANY ANNIVERSARIES** this week are: **Wilbert F. DeGeeter**, Rubber Bench Layout & Cutting-Assembly (September 3), **John L. Kline, Jr.**, Overhead Crane Operator-Plant 2 (September 4), 15 years; and 10 years for **Ronald F. Reed**, Account Sales Manager-Eastern Region.

**SUCCESS INVOLVES** making more money to pay more taxes you wouldn't have to pay if you weren't making more money.

**NEW FACES . . .** Welcome to: **Thomas P. Warren**, Account Sales Engineer; **Kenneth L. Mitchell**, Sheet Metal Helper-Steel Fabrication; **George E. Miller**, Literature Clerk-Office Services.

**THEY WHO** would supervise others must first learn to supervise themselves.

**WFI TRAP LEAGUE CALLOUT . . .** Sunday, September 17, 10:00 A.M., Chain-O-Lakes Gun Club (West of South Bend). **New members welcomed — Instructions given.**



**Paddling to a second place victory** at the U.S. Canoeing Association's National Canoe Races held August 20 in St. Charles, Illinois, was our mighty paddler **WILL GLUSAC**, Manager-Cost Accounting. Time recorded for Will and his partner John Geizer of Pingsville, Ohio was 2 hours, 16 minutes. Winning time was 2 hours, 15 minutes! What a super race!

On this point we all agree:  
working together — not alone  
Is the whole story  
as told by Sloan.

Pinstripe suits or workman's blue  
only depends on what you do.  
A team is a team in spite of dress  
and remains one while producing the best.

The message is as above —  
working together — not alone  
To make the best there is to sell,  
doing it quickly, doing it well,  
Painting it neatly, it's brand new  
always in WFI blue.



**"You're supposed to work, too!"**

Published weekly by and for employees of Materials Cleaning Systems Division.

Wheelabrator-Frye Inc.  
400 South Byrkit Avenue  
Mishawaka, Indiana 46544

Del Tenney, Editor ..... Ext. 397