

# the Wheelagram



Materials Cleaning Systems Division  
**Wheelabrator-Frye Inc.**

VOL. II NO. 6

FEBRUARY 17, 1978

**TELLS STORY . . . Ray Donovan**, Manager-Jet Pulser, was the guest speaker at the January meeting of the Society of Manufacturing Engineers, Elkhart-Goshen chapter. Ray's subject was the development of Wheelabrator's Jet Pulser System.

**THE WHEELABRATOR WAY . . . Carboline Company**, St. Louis — a major manufacturer of paints and other protective coatings — recently conducted a company training seminar. Purpose: To acquaint their technical service, sales and laboratory personnel with centrifugal blast cleaning machines and surface preparation technology. **"Duke" Mallory**, Manager, Technical Development-Marketing was on hand to present the "Wheelabrator way." Both in-shop and portable (Blastrac) systems were discussed. Other Wheelabrator personnel attending the seminar were **Walt Freed**, Account Sales Engineer and **Macon Jones**, Equipment Sales Engineer.

**PROMOTIONS . . . Congratulations to KATHY WYATT** promoted from Senior Purchasing Clerk to Secretary-Marketing.

**WHY IS IT** that when an opportunity is lost, it's usually your competitor who finds it?

**CO-WORKERS BID WILSON ZANG FAREWELL . . .**



**Wilson Zang**, Special Assembler-Balcrank Assembly, was honored by co-workers on the occasion of his retirement, after 12 years of company service. Good luck and best wishes, Wilson!

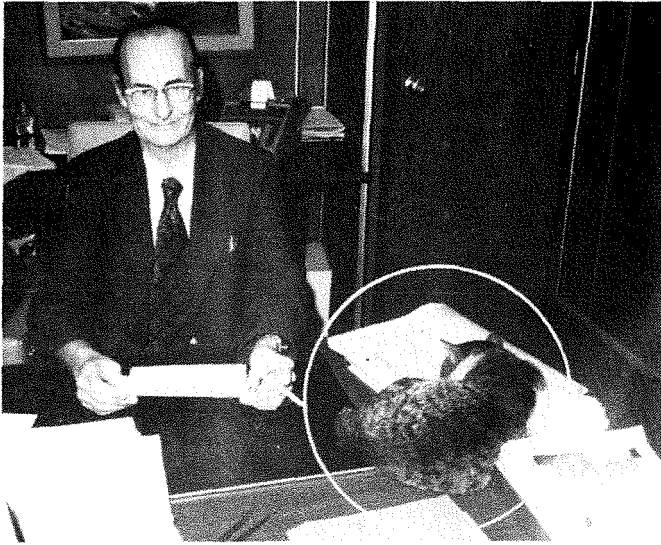
**BULB SNATCHERS AT MCSD???**



What may have appeared to be bulb snatching by plant electricians, Lynn Kaser and Jerry Crowe, throughout the plant this week was actually the implementation of one of WFI's conservation measures to voluntarily reduce our electrical consumption.



## DO NOT DISTURB!



Division Treasurer, Ed Sullivan, had an unexpected visitor Monday. Our plant cat ventured forth from the shop and, while visiting the Financial area, decided to take a morning snooze on Ed's desk. Ed, a considerate man, worked quietly.

**NEW FACES . . .** A big Wheelabrator welcome to **GEORGE O. SCHULLER**, Detailer-Engineering Services (co-op student); **ROGER M. KASER**, Detailer-Balcrank Engineering and **VIRGINIA CIESIELSKI**, Accounting Clerk-Cost Accounting.

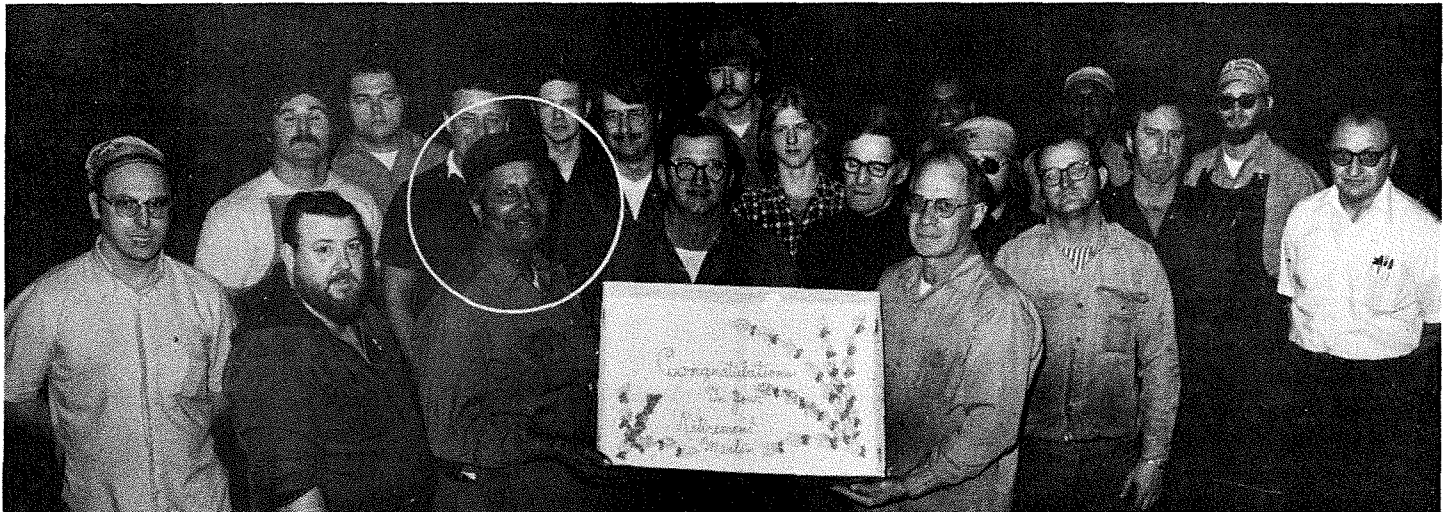
## DATES TO REMEMBER . . .

**February 25 & 26 — JA Trade Fair**, Scottsdale Mall, 10:00 A.M.-9:00 P.M., Saturday; Noon-5:00 P.M., Sunday.

**February 26 — WFI Employees Federal Credit Union** annual membership meeting, 1:30 P.M., First National Bank Branch (Basement Conference Room), Main & Mishawaka, Mishawaka.

**March 1 — Julianna Club Scholarship** deadline.

## FAREWELL, MARLIN . . .



Second shift co-workers gathered last Friday to bid Marlin Copley, Arc Welder-Fabrication, well on the occasion of his retirement. Marlin has 13 years of company service. Good luck, Marlin!

**ART DIRECTOR, TONY PETERS**, needs your help! If you're interested in serving on the committee to develop a program for the exhibition of WFI employees' creative work, call Tony on ext. 412.

**APPOINTMENTS . . .** Appointed to the staff of the Financial Department is **JOHN L. STEWART** who will be devoting his time to international matters and special projects. Prior to joining Wheelabrator, John was employed by IBEC and Exxon with assignments both in the U.S. and South America.

Joining the sales team on the West Coast is **BEN RICHARDSON**. Ben is a graduate of California State University at Fullerton and for the past four years has been selling foundry supplies in the Los Angeles market with the firm of Stan Brand.

Welcome aboard John and Ben!

## IN THE MIDST OF THE "BIG SNOW"



Our Regional Sales Managers were in Mishawaka for a review and critique of '77 performance and to firm up the Marketing Plans and activities for 1978.