

the Wheelagram



Materials Cleaning Systems Division
Wheelabrator-Frye Inc.

VOL. II

NO. 31

AUGUST 25, 1978

IN OBSERVANCE OF LABOR DAY, all departments will be closed Friday, September 1 through Monday, September 4. Next week's **Wheelagram** will be available Thursday, August 31.

CELEBRATING 15 YEARS of company service tomorrow are: **Ted L. Fawcett**, Equipment Sales Engineer-Eastern Region and **Tamper Loder**, Electric Melt Furnace Operator-Plant 2.

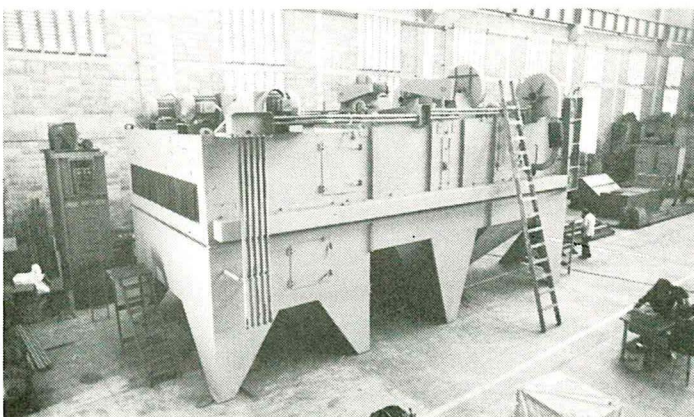
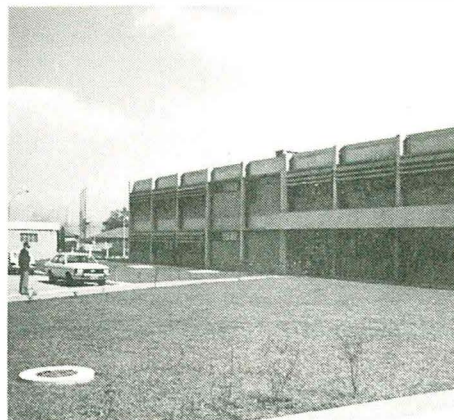
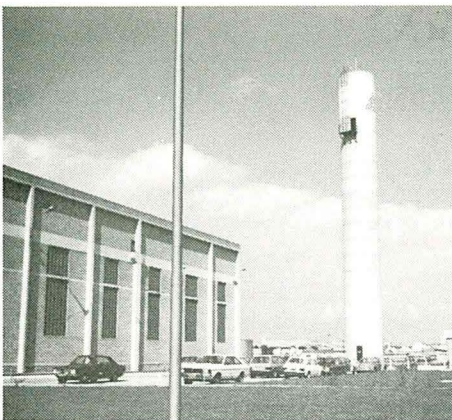
JA WANTS YOU! IF — you are willing to accept the challenge of working with enthusiastic teenagers from October to May, two hours per week. To be a member of an adviser team that guides and counsels a JA company, contact **Pat Nagy** (ext. 225) or **Walt Wolf** (329).

AVERAGE EMPLOYEES do only what is required of them. Top employees do that — and a little bit more.

CONGRATULATIONS to **Mike Burge**, recently appointed to the newly created position of Payroll Manager. Good luck in your new assignment, Mike!

NEW FACES . . . A Wheelabrator welcome to: **Timothy W. Harvey**, Arc Welder-Steel Fabrication; **James R. Batten**, Sheet Metal Helper-Steel Fabrication; **Dennis G. Lieburn**, Service Engineer-Marketing; **Diana S. Hays**, Accounts Payable Clerk-General Accounting; **Danny J. Benson**, Utility Man-Steel Fabrication.

ZIMMER NAMED PERSONNEL DIRECTOR . . . **Karl Zimmer**, formerly Personnel Director of our sister company, Miniature Precision Bearings (M.P.B.) Keene, New Hampshire, has been named Personnel Director of our division, effective August 15. Karl's responsibilities include implementation and coordination of employee indoctrination and training, placement, safety programs, benefits and employee services, wage administration policies, EEO activities and the affirmative action programs. Welcome to Mishawaka, Karl!

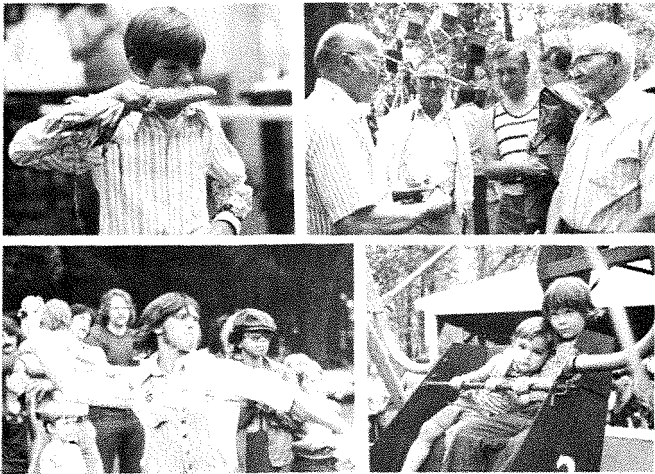


WHEELABRATOR SINTO DO BRASIL LTDA., ON CAMERA . . . On a recent trip to our sister company in Sao Paulo, Brasil, **John Burlingame** took time out from his international duties to play photographer for the **Wheelagram**. (top left) An exterior view of our main Fabrication and Assembly Shop; (center) The office building located in front of the Fabrication Shop; (right) Personnel assembling Long-Lyfe wear plates in the interior of the 8-wheel Usimec blast chamber. (bottom left) Ready for shipment is the largest horizontal plate and structural cleaning machine ever built in the Western Hemisphere.

ON THE SPORTS SCENE . . .

TWILIGHT GOLF LEAGUE RESULTS — After 10 rounds of play, Team 6 (**S. Sinderson, B. Wolff, D. LaPlace, B. Gibbens**) continues to lead the league. First Team Low Net (134) Team 2 (**D. Hanson, D. Soviak, R. Kanouse, R. Slater**). First Team Low Scratch (153) Team 11 (**G. Griffin, J. Baker, R. Hullinger, L. Cookie**). First Individual Low Net (23) **Bill Smith**. First Individual Low Scratch (32) **Don Ansbaugh**. **NOTE:** Anyone planning to play in the Twilight Golf League Outing at Sprig-O-Mint, September 10, must sign up by next Thursday — contact **Larry Baker**.

WHEELABRATOR SOFTBALL TEAM RESULTS — WFI's League and City Tourney Champs bowed to Village Green 7-4 in the last game of the season. Chalk up a homer for **Ron Good, 3 for 4 with 2 triples for Bruce McConahay, Pat Woodruff**, pitcher. **FLASH** — League and City Tourney trophies earned by the champs will be on display in the trophy case in the main building.



IT WAS A GOOD TIME last year and we anticipate an even better time **tomorrow** at the annually-held Wheelabrator Athletic Association picnic. If you haven't picked up your ticket, do so today from your area AA rep. The festivities begin at Noon, Wander Conservation Club. Don't miss out on the fun!

IT'S OUR GOVERNMENT AND IT'S OUR MONEY! Taxes have become so much a part of everything we buy and do that we have grown too complacent about them. And, with the development of withholding tax on income and the hidden taxes on everything we buy and do, few of us recognize where the money comes from.

Government services, whether at the local, state or federal level, cost money, and there is only one place from which this money can come — that is from us, the people. Whether it is paid directly through income, property or sales taxes, or indirectly through some hidden "painless" way, it eventually must come out of the pocket of the taxpayer.

Is it not time that all of us take more interest in our government — what it's doing and what it's costing? After all, it's our money that government spends.



"Let's leave before they come up with another idea that can't work."

Published weekly by and for employees of Materials Cleaning Systems Division.
Wheelabrator-Frye Inc.
400 South Byrkit Avenue
Mishawaka, Indiana 46544
Del Tenney, Editor Ext. 397