

the Wheelagram

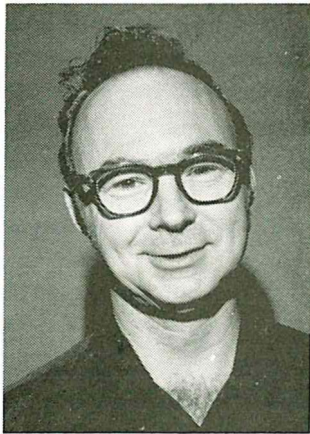


Materials Cleaning Systems Division
Wheelabrator-Frye Inc.

VOL. II NO. 35

SEPTEMBER 22, 1978

HAPPY ANNIVERSARY . . .



Today marks 25 years of company service for **JAMES A. RIGDON**. Jim is Supervisor, Production/Inventory Control. **RALPH BALLARD**, Manager, Blast Demo Lab, chalked up 20 years of service September 19 and 15 years for **RAYMOND J. LADOW**, General Order Filler, Stockroom, September 19. Congratulations to all!

THE TROUBLE WITH being a parent is that by the time you're experienced, you're usually unemployed.

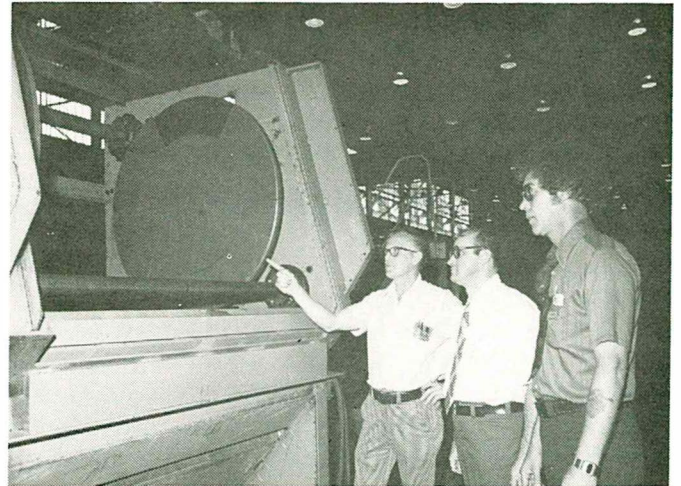
APPOINTMENTS & PROMOTIONS . . . Congratulations to: **Patsy L. Becher** promoted from Stenographer to Secretary-Marketing; **Jack Weiss** from General Sales Manager to General Manager-Balcrank Products Division; **Larry Koeplinger** appointed Equipment Sales Engineer-Southern Region; **Jeff Nelson** appointed PFP Sales Engineer. Good luck in your new assignments!

WANT TO MAKE your old home more attractive? Just price a new one.

NEW FACES . . . A Wheelabrator welcome to: **Tod C. Wilcock**, Sales Trainee-Marketing; **James M. Hicks**, Service Engineer Trainee-Marketing; **Richard S. Marsh**, Service Engineer-Eastern Region.

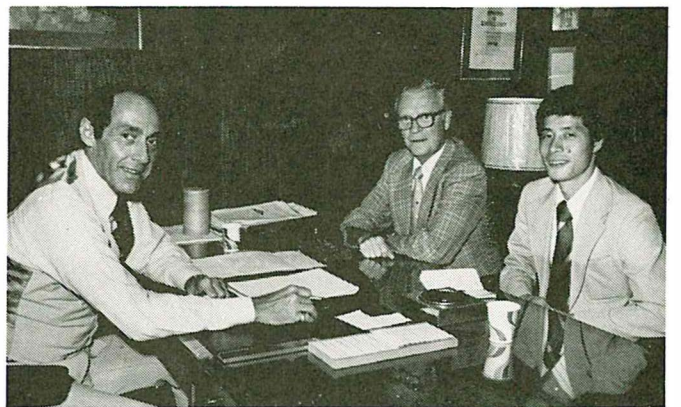
FREE ENTERPRISE — It Works When We Do!

FOLLOW-UP . . .



Wheelabrator de Mexico's Engineering Manager, **JUAN "HANS" SOHN**, was in Mishawaka recently for a follow-up to **HANK VANWAEYENBERGHE**'s "on-the-floor" consulting in Mexico. Hank (l) and Assembly Superintendent, **BILL CHOLASINSKI** (r), review details of the Super II Tumblast with Hans (center).

MEETING OF THE MINDS . . .



In an exchange of ideas in the area of Abrasives are: (from left) **MAURIE McCALLY**, Manager-Special Applications-Abrasive Products; **CHARLIE CARLIN**, Marketing Manager-Abrasive Products and **SHOJIRO TAKASE**, Metallurgical Engineer-Sintobrator. Prior to visiting us here in Mishawaka, Shojiro attended the Modern Language Institute, University of Michigan.

THE NAME OF THE GAME — SALES!



Recently, regional sales meetings were held throughout the country to review our marketing strategies for the last half of '78. On camera — some of the crew from our Southern Region: (top, from left) JIM HARRIMAN, Regional Manager; DAVE BUNCE, BILL HAMMOND (Wheelabrator Financial Corp.), GARY WEIL. (bottom, from left) JOE PONTERI, National Sales Manager; DAVE BUNCE, home run champ in the "Wheel Tune Up Kit Sales Contest," receives his trophy from Joe. If you recall, Dave edged out Jerry Maddern 102 to 101.

A NEW TWIST ON "TWISTERS" . . . During a tornado, the northeast corner of a house may offer more protection than the southwest corner, the traditional haven from tornadoes. After studying actual tornadoes and conducting wind-tunnel tests, University of Kansas professor of geography and meteorology, Joe E. Eagleman, found that the corner of the house closest to the approaching tornado (usually the southwest corner) is the first part of the house to be damaged. Debris from the ruined walls and roof is apt to drop straight down. The corner of the house farthest away from the approaching tornado appears to suffer the least damage and to offer more protection from debris.

"A POLITICIAN IS a person with whose politics you disagree; if you agree with him, he is a statesman." (David Lloyd George)

THEY TELL US the following prayer was offered by Dr. Blake Smith before a football game in Texas:

"In Thy presence we know that no issues of great importance are going to be settled here this afternoon. No souls are going to be lost or saved by the official figures on the scoreboard. No great cause is at stake. It is one of those pleasures which Thou has meant for Thy children to enjoy. Do not let us spoil it by forgetting that it is just a game to be enjoyed today, talked about tomorrow and forgotten the day afterward."

Amen!

HE WHO THINKS he knows it all is most annoying to those of us who do.



He's right. He isn't working.

CARDS •



"Got a card that apologizes for talking back to a supervisor?"

Published weekly by and for employees of Materials Cleaning Systems Division.
 Wheelabrator-Frye Inc.
 400 South Byrkit Avenue
 Mishawaka, Indiana 46544
 Del Tenney, Editor Ext. 397