

the Wheelagram



Materials Cleaning Systems Division
Wheelabrator-Frye Inc.

VOL. II NO. 9

MARCH 10, 1978

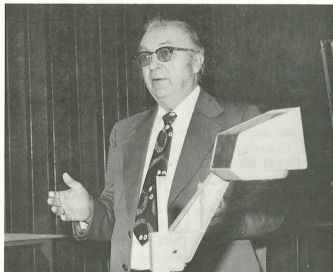
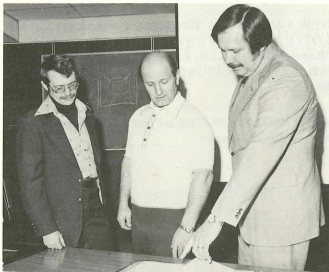
PROMOTIONS . . . Congratulations to JACK TRANT who was recently named Vice President-Division General Counsel. Responsible for MCSD legal affairs, Jack will also have broadened responsibilities for special projects assigned to him, including coordination of our legislative relations. In addition, Jack will begin to work more closely with Bob Orth relating to our domestic and international licensing activities, patent applications, and patent prosecution policies.

ELECTRICAL CURTAILMENT CONTINUES

. . . Based upon the present coal supply at I&M, indications are that the current 25% electrical curtailment will continue. At a recent meeting of industrial leaders held at the SBM Chamber of Commerce, an I&M spokesman stated that a com-

(Continued on back page)

TARABEK'S SCHOOL BELL RINGS FOR SERVICE ENGINEERS . . .



MCSD Service Engineers (bottom photo) were in Mishawaka earlier this week for a two-day training school on our Precision Finishing Products and Orboresonant Cleaning Systems. (photo, left) Gene Tarabek (r), Manager-Customer Service and Service Engineers (l. to r.) Cliff Spear (West Central Region) and Jack Grisso (Eastern Region) look over one of the two manuals prepared for distribution to the attendees. (photo, right) Harvey VanFossen, Engineer-Product Development, pictured here in his role as instructor.

(Continued from front page)

bination of electrical conservation, warmer weather, and receipt of limited amounts of coal have stabilized the supply of coal at near the 40 day level. If all factors continue to be favorable, it may delay the need for further curtailments for as much as 30 days or more.

Wheelabrator-Frye is cooperating fully with I&M to achieve the required reduction. This has been accomplished by reducing overall electrical consumption throughout the offices and plants and by shutting down arc furnaces in Plant 2 to bring us in line with predetermined levels. Wheelabrator-Frye personnel are monitoring our meters every shift to insure that we are on target each Friday, when I&M representatives read the meters for all major industries in the area.

Your continued efforts to reduce consumption of electricity are appreciated.

WFI FEDERAL CREDIT UNION announces election results . . . The following were elected officers and board members of the WFI Federal Credit Union at its annual meeting held February 26: AL SKWIERCZ, President; EDWARD DOBBS, Vice President; GORDON ROGALSKI, Treasurer; DELORES BURTSFIELD, Secretary; ALLEN "WALT" WOLF, Board Member. New credit committee members and officers are: BEN DeLARUELLE, Chairman; EDWARD RIDENOUR, Loan Officer; FRED BRITTON, Member; DON MILZAREK, Night Shift Member. Supervisor committee includes: WAYNE L. SCHLEMMER, DONALD BARE, DAN CAIN. The Credit Union Board wishes to thank the nominating committee — EDDIE RUSSELL, JERRY KINNEY and SOPHIE KINNEY — for a terrific job and special thanks to the refreshment committee — ALTA MYERS, SOPHIE KINNEY, AGNES DARST and NANCY JERMANO.

CELEBRATING 15 YEARS of company service this week are: ROBERT J. GREEN, National Product Service Manager-Balcrank Products Service and WILLIAM H. WAGNER, Arc Welder-Steel Fabrication. Congratulations, guys!

LET THERE BE LIGHT . . . When you flip the light switch on the wall, you start up one of the most completely automated processes in the world.

Electricity cannot be made and stored in advance. It is made and delivered immediately, to your order, at the speed of light. From your light switch, back through wires, meters, transformers, substations, generators, switchgear, turbines — right back to the fuel sources such as the coal pile, gas, oil, or watershed — there are hundreds of self-supervising and self-regulating devices.

With energy sources becoming scarce, don't flip switches carelessly or leave lights and motors on unnecessarily.

THEY'RE BLUE CHIP! . . . Wheelabrator sponsored JA companies — **Future Image** and **Wheels of Balance** — were "Blue Chip Company of the Month" winners. Congratulations to our J.A.'s and their WFI advisors!

HERE, THERE, EVERYWHERE . . . DEL EVANS, Industry Manager-Steel, addressed the Metal Fabricating Institute held at Texas Christian University, Ft. Worth, February 28. The subject — "Surface Preparation." Sponsored by the publishers of *Metal Fabricating News*, the institutes are held annually throughout the country and Canada to promote continuing education for industry.

JOHN DIVINE, Vibratory Specialist, traveled to Dallas to present the "Wheelabrator Way" to the dealers of the Hutson Corp., manufacturers of vibratory equipment and distributor of our PEP supplies.

AND, at Purdue — at the 17th Annual Corrosion Short Course — "DUKE" MALLORY, Manager, Technical Development-Marketing, addressed the attendees of the Advanced Topics Course on "Surface Preparation of Steel and Concrete Surfaces Prior to Coating Applications."

NEW FACES . . . A Wheelabrator welcome to CHARLOTTE "Charlie" STEWARD, Clerk-Plant 2; BONITA "Bonnie" BRUBAKER, Receptionist-Office Services; and WILLIAM O. LINGRELL, JR., Field Technician-Blastrac.

WITH TODAY'S PRICES, we just marvel at anyone who can call a market super.



"You have three get well cards from the boys and a 'We love you' from the Safety Committee."

Published weekly by and for employees of Materials Cleaning Systems Division.

Wheelabrator-Frye Inc.
400 South Byrkit Avenue
Mishawaka, Indiana 46544

Del Tenney, Editor Ext. 397