

the Wheelagram



Materials Cleaning Systems Division
Wheelabrator-Frye Inc.

VOL. 11 NO. 30

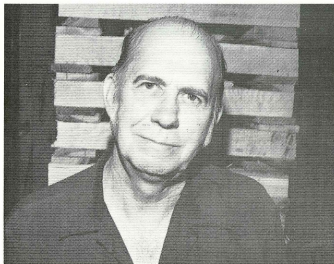
AUGUST 18, 1978

MELTERS CONTEST ANNOUNCED . . . Jim Converse, Manager-Plant 2, has announced a contest for his Melters — "Melter of the Month." The contest is designed to build pride and improve the quality of our abrasive, as well as to put some fun and competition into daily work. The men will compete for points based on established criteria. In addition to the monthly award, these winners will automatically qualify to be judged in the "Melter of the Year" contest. Awards will be announced in the *Wheelagram*. Good luck, guys!

PROMOTIONS . . . Congratulations to Lloyd D. Burrow who has been named Plant Superintendent-Bedford and to Ray Fuller who replaces Lloyd as General Foreman-Plant 2 (second shift). Good luck in your new assignments, guys!

NEW FACES . . . Welcome to: Laine E. Henkel, Secretary-Abrasive Sales; John R. Mow, Manager, Special Projects-Manufacturing Engineering; James W. Weaver, Maintenance Assistant Foreman Dispatcher-Maintenance; Gary L. Hermann, Sheet Metal Helper-Steel Shop; Jack E. Coleman, Maintenance Foreman-Plant 2; James M. Robbins, Staff Accountant-General Accounting; Patricia L. Conley, Accountant Clerk-Cost Accounting.

RENFROE AND DANZY REACH 25-YEAR MARK . . .



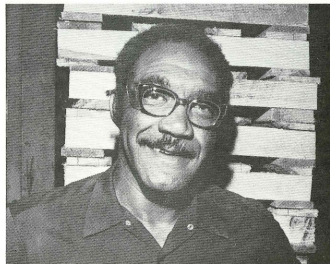
ROGUES' GALLERY???



Of course not! Anyone can plainly see that these are the gentlemen who shot 10 under par and emerged victorious in the Florida Scramble Golf Tournament, held in lieu of league play during plant shutdown. The mighty athletes are (from left): Phil Jordan, Gene Tarabek, Bill Shultz and Gerry Griffin.

INTERESTED IN FURTHERING YOUR EDUCATION? Information is now available on courses of study being offered this Fall by U.S.B. Check with Personnel — and while you're at it, ask about Wheelabrator's Tuition Reimbursement Program.

A WISE MAN learns from the mistakes of others. Nobody lives long enough to make them all himself.



WILLIAM L. RENFROE (left) Shop Lift Truck-Plant 2 and **LEROY H. DANZY**, Millwright-Plant 2, celebrate 25 years of company service this week. **WILHELM "BILL" ELING**, Lab Technician-Blast Demonstration Lab and **LUCY I. SEIDER**, Secretary-Export, celebrate 15 years of service tomorrow while **RAYMOND N. HANKS**, Blanchard Grinder-Machine Shop and **GERRY BANK**, Division Controller, chalk up 10 years. Congratulations to all!

NEW FACES . . . Stan L. LaBancz has been appointed to the position of Product Manager-Sand Reclamation. Stan comes to us from the Quaker Oats Company, Chemicals Division, Chicago, where he served as Foundry Applications Engineer, developing and implementing programs for foundries and engineering consultants to show the advantages of the No-Bake Molding Process. Welcome aboard!

WFI CREDIT UNION NEWS . . . Due to the heavy increase in weekly deductions from Credit Union payroll accounts, it is **once again** necessary to enforce the ruling of **one withdrawal per month per member** from their Credit Union savings account.

WFI EMPLOYEES TO DISPLAY THEIR CREATIVE WORK . . . Employees interested in exhibiting their original works of art — from oils to sculpture and hobby crafts — will have the opportunity to bring their work to the Main Lobby, Monday, May 22, between the hours of 6:45 A.M. and 8:30 A.M. Catalog cards are available from **Marcia Batten**, Engineering (ext. 432) and **Carol Harris**, R & D (ext. 477). These cards will be used as identification of the art and artist at the time of display.

Beautiful young people are accidents of nature; beautiful old people planned it that way.

THE SUBJECT IS . . . John Burlingame, Vice President-Marketing, last night addressed a joint meeting of the American Marketing Association and Planning Executives Institute (Michiana Chapter) on "Capital Goods Marketing."

ATHLETIC ASSOCIATION "employees only" STAG Saturday, April 29, BK Club, Mishawaka. Donation \$1.00.

JULIANNA JABBER . . . Annual fund-raising card party next Thursday, 7:30 P.M., Queen of Peace, Mishawaka. **You haven't bought your ticket yet???** Check bulletin board for name of ticket rep in your area. Lots and lots of neat prizes (we've been peeking)! . . .

There is but one way to be kind. There are countless ways not to.

WITH APRIL 15 behind us we offer the following (with apologies to A. Lincoln):

LET THERE BE TAXES AND DEDUCTIONS, BUT . . . Some score and odd years ago, the politicians brought forth upon this land the income tax, conceived in desperation and dedicated to the proposition that all employees appreciate deductions.

Now, new politicians are engaged in a great debate, testing whether employees so dedicated can long endure further deductions. But in a larger sense, we cannot pay more, we cannot give more. We brave employees who struggle with paychecks have given our all. There is little left from which to subtract.

The politicians will little note, nor long remember what is said here, but they must never forget our anguish and torture. In the legal sense, we cannot avoid; we cannot evade; we cannot cheat; we dare not underestimate the tax. For collectors, computer-clever, have gone far beyond our powers to figure.

It is for us, then, the taxpayers, to devote ourselves to tax returns with our last full measure of savings that we here highly resolve that our money not be spent in vain, that next year will not find us in too high an income tax bracket, and that high taxation of the people, by the politicians, for questionable purposes shall finally perish from our land.



A MILESTONE — WHEELAGRAM 1 YEAR OLD TOMORROW! A great **BIG thank you** to everyone here in the home office and in the field for the cooperation, comments and suggestions you extended to the editor this past year.

Published weekly by and for employees of Materials Cleaning Systems Division.

Wheelabrator-Frye Inc.
400 South Byrkit Avenue
Mishawaka, Indiana 46544

Del Tenney, Editor Ext. 397