

the Wheelagram

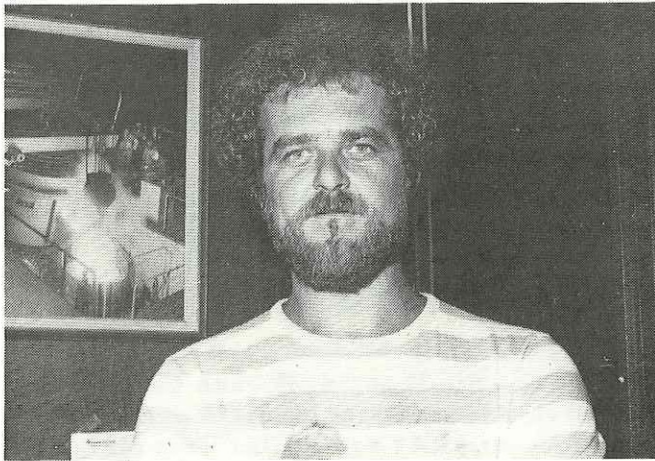


Materials Cleaning Systems Division
Wheelabrator-Frye Inc.

VOL. II NO. 34

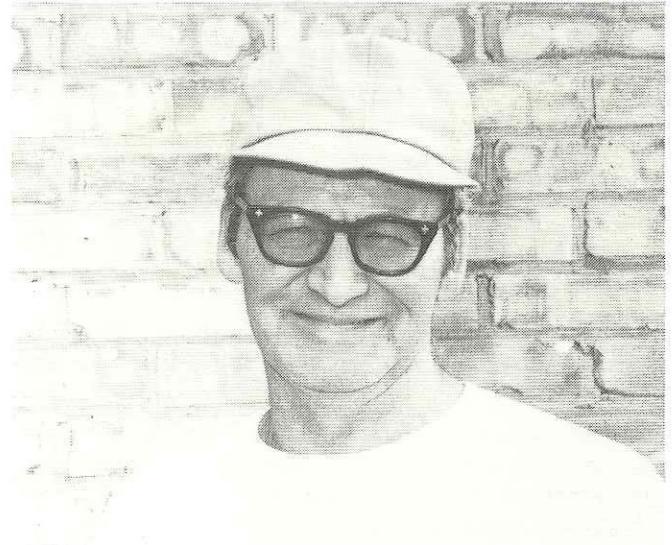
SEPTEMBER 15, 1978

HE'S A WINNER!



EVERETT "BUTCH" WILLIAMS, JR., second shift Melter-Plant 2, is the first recipient of the "Melter of the Month" award. As mentioned previously in the Wheelagram, this contest is designed to build pride and improve the quality of our abrasive, as well as to put some fun and competition into daily work. In addition to receiving a handsome pewter Wheelabrator mug, Butch and his wife will be treated to a night on the town. Congratulations, Butch!

25-YEAR MAN . . .



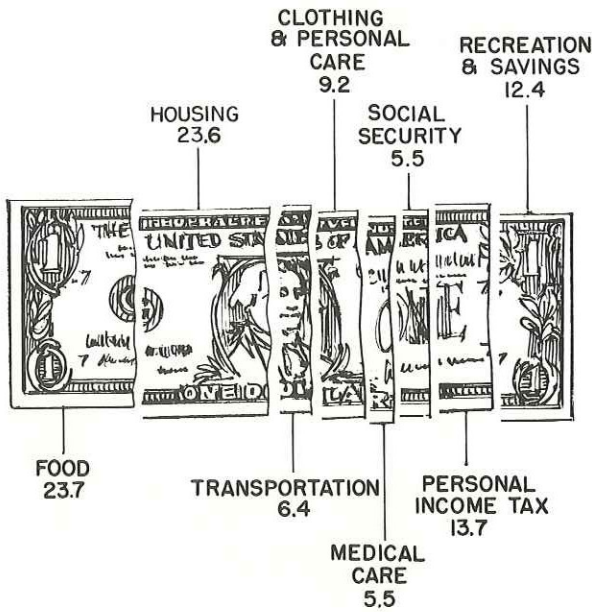
Congratulations to **WILLIAM M. KRING**, Carpenter-North Shipping, who celebrated 25 years of company service yesterday! Congratulations, too, to **THOMAS F. McFALL**, Arc Welder, Steel Fabrication, who celebrated 10 years of service September 12.

THEY DID IT AGAIN!



Winner of the June Safety Contest is Team 1 made up of personnel from Balcrank Stores, North Shipping, Materials Handling and Balcrank Shipping. Representing their teammates is the gang from North Shipping. This safety-conscious team took first place honors in the March Safety Contest as well! Congratulations!

WHERE DO CONSUMER DOLLARS GO?



What does the average consumer do with his income? Of course, it varies, but you can get a rough idea based on recent statistics.

The median family income in 1977 (for a family of four) was \$15,001. If a family had one earner the average income was \$12,000; if two earners then the average income was \$17,000. Americans now save about 8.0% of their incomes, but where does the rest go?

Food (home consumption and purchased meals) accounts for 23.7% of spending, making it the biggest single budget item. Housing, including furniture, supplies, and utilities, comes next, taking up 23.6% of spending. Following these are Personal Income Tax (13.7%); Clothing and Personal Care, including accessories, jewelry, services such as dry cleaning and shoe repair, beverages, tobacco, education, charities and other items not specifically categorized (9.2%); Transportation (6.4%); Medical Care (5.5%); and Social Security (5.5%). The balance of roughly 4.4% is spent on recreation.

TODAY IS THE LAST DAY to register for the Credit Union's Vacation Club. Take advantage of this newly-offered service — it's another way of helping you to save for that special trip!

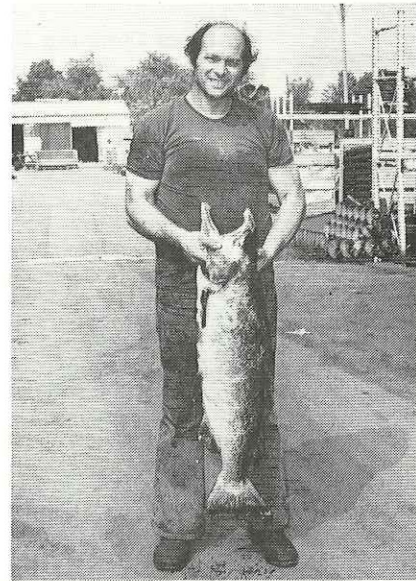
HIS AND HERS . . . A Purdue University professor says that people segregate their homes into male and female spaces. For example, kitchens are traditionally feminine and may offer a form of structured retreat for women in a family conflict.

Men, on the other hand, typically withdraw to the garage or living room to sulk or be alone. Worse yet, some males may not identify with any areas of the home, and as a result may leave altogether after a fight.

The family room didn't exist 30 years ago. Now it serves as one of the only places where it is sanctioned for the whole family to come together.

ON THE SPORTS SCENE . . .

YOU SHOULD HAVE SEEN THE ONE THAT GOT AWAY!



MAX VENA, Truck Mechanic-Plant 1 Maintenance, shows us his prize 30 pound, 39½-inch Chinook (King Salmon) caught last weekend in Lake Michigan. Wheelabrator co-workers **RAY VANVOOREN** and **BILL RUTKOWSKI** were on hand to lend moral support. Max tells us it took an hour to land this baby! (Burmeister and Sanders, please note!)

TWILIGHT GOLF LEAGUE RESULTS . . . After 12 rounds of play Team 11 (**G. Griffin, J. Baker, R. Hullinger, L. Cookie**) leads the league. First Team Low Net (134) three-way tie between Teams 2 (**D. Hanson, D. Saviak, R. Kanouse, R. Slater**), 8 (**B. Smith, T. Wagner, W. Meckley, M. Termont**) and 11. First Team Low Scratch (149) Team 11. First Individual Low Net (23) **Bill Smith**. First Individual Low Scratch (32) **Don Ansbaugh**. *Wheelagram's Believe It or Not:* After 13 rounds of play scores are identical to those printed above!

NOW HUMAN-BODY WORTH \$5.60 . . . Everybody is worth more because of inflation. Every body, that is.

The value of the human body's chemical elements — oxygen, nitrogen, hydrogen, phosphorous, magnesium, iron, carbon and others — is now at an all-time high of \$5.60 compared to 98 cents in 1936, according to Dr. Ernest Tillman, a staff physician at the Monsanto Chemical Company.

Published weekly by and for employees of Materials Cleaning Systems Division.

Wheelabrator-Frye Inc.
400 South Byrkit Avenue
Mishawaka, Indiana 46544

Del Tenney, Editor Ext. 397