

the Wheelagram



Materials Cleaning Systems Division
Wheelabrator-Frye Inc.

VOL. 11

NO. 36

SEPTEMBER 29, 1978

YOU CAN MAKE IT HAPPEN . . . It's that time of year when we all are called on to work "a little bit" the **United Way** for those who may not be able to or who just can't help themselves. Plans are already in progress for a canvas of all employees, beginning in the plant October 10.

A nearly complete committee has been named by **Dale Bressler**, along with a representative group from the office and Julianna Club, coordinated by **Lorri Pfender**. Those named so far to make the "united" effort are: **Dale, Al Skwiercz, John Phillips, Randy DeCraene, Jackie Mazurkiewicz, Clara Kovach, Lori Hardy, Ann Barlich, Terri Burtsfield, Debbie Barrier, Sherry Barrett, Karen Sikora, Ellen Warren and Lorrie Pfender.**

To help in their solicitations, these employees have been invited to tour two agencies of the United Way — Logan Industries and the Family and Children's Center. Logan Industries is a workshop of the Council for the Retarded providing job training and employment. Family and Children's Center provides resident child care, professional counseling for children, parents, individual therapy, parent education and marriage communication groups.



WFI United Way workers met Wednesday, September 20 to formulate their plans for the canvas. REMEMBER: Your fair share is also tax deductible.

CELEBRATING COMPANY ANNIVERSARIES this week are **Charles E. Richhart, Sr.**, Production Electrician-Assembly (September 23) and **Gary L. VanBelleghem**, Sweeper/Laborer-Foundry.

YOU CAN'T finish anything you don't start.

WORK LOAD HEAVY IN MOST PRODUCT LINES . . . Employees should be aware that production requirements are heavy for most product lines and will remain heavy for the balance of the year.

The Company has, for many years, had a policy of maintaining a stable workforce. As a result, we are asking many employees to work a heavier-than-usual overtime schedule, rather than hiring additional employees to meet the current demands. This helps prevent layoffs when production requirements are not as heavy.

You may be one of those called upon to help get the product out — thereby meeting customer requirements and doing your part in keeping the customer for future business.

BLUE CROSS-BLUE SHIELD REP HERE OCTOBER 11 . . . William Dunn, Sales and Account Representative of Blue Cross-Blue Shield will be in Mishawaka October 11 to discuss administration of the Vision and Hearing Benefits Program. Dunn will meet with representatives of salary and hourly employees to set up the first steps to putting the program into effect January, 1979.

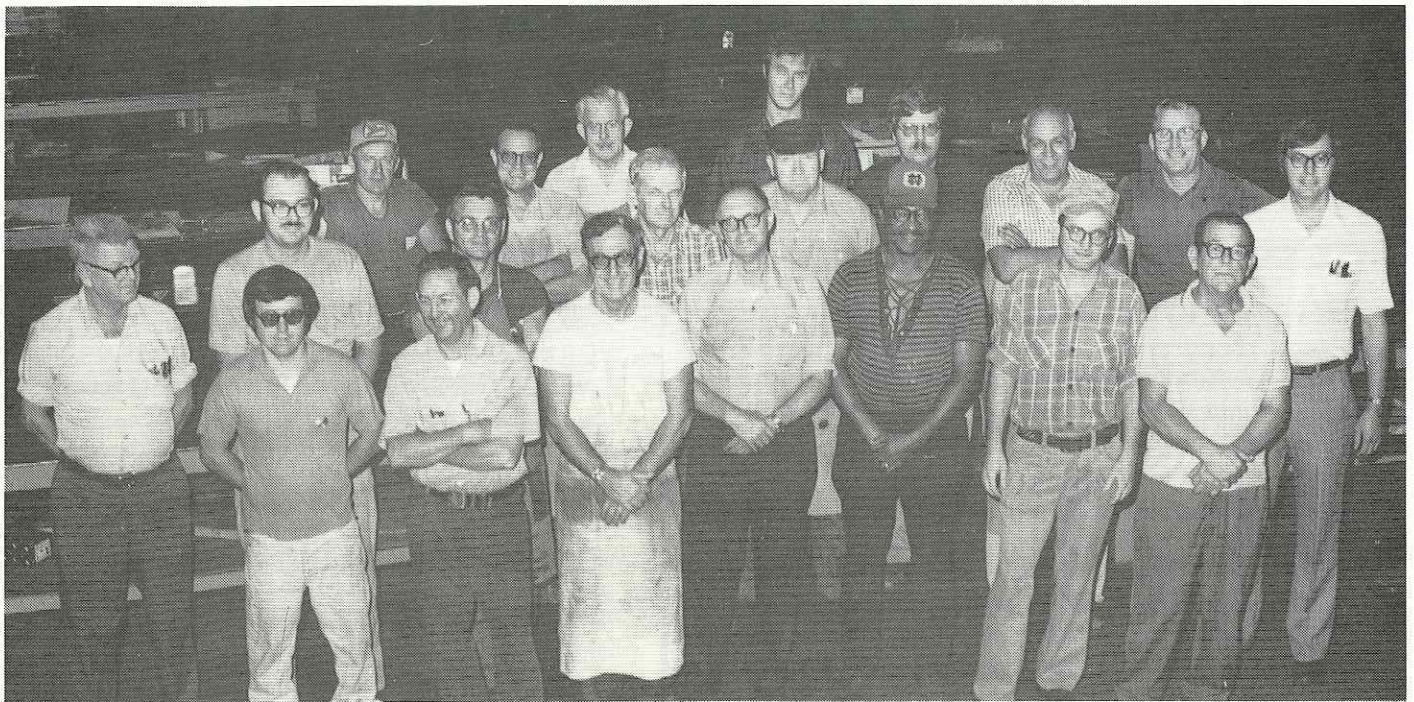
THE DIFFERENCE between failure and success is doing a thing **nearly** right and doing it **exactly** right.

NEW FACES . . . Welcome to: **Donald J. Passehl**, PFP Sales Engineer; **Francine K. Broadnax**, Stenographer-Marketing; **Lorrie S. Dalton**, Clerk-Typist-Engineering.

PROJECT BUSINESS, a division of Junior Achievement, is underway. Serving as consultants to area high schools are WFI experts **Jerry Bank, Wayne Benitz, Will Glusac, Bob Lindner and Paul Simpson.** (Jerry and Will will be serving as consultants to Steve Rethlake's Marian class. Steve is the son of Mary Lou, secretary to Jim Cooke, Vice President-Marketing — all in the family!)

EARNING WHILE LEARNING . . . 19 employees are increasing their job knowledge and skills by taking advantage of WFI's Tuition Reimbursement Program this Fall at area institutions of learning. Remember — it's never too late. Next semester is just around the corner!

THE WINNER IS . . .



Taking first place in the July Safety Contest is Team 15. This team is made up of employees from Area 1563 (Plate Fabrication-Steel Shop). Congratulations, guys!

ON THE SPORTS SCENE . . .

FLASH — Maurice “Bogie” Bogaert coached the Burcliff Industries AA Fast Pitch Softball Team to a second place victory in the state tourney. Machine Shop co-worker Bob Kibbe is the first baseman of the Cinderella team. (Bogie’s boys arrived at the tourney via a playoff.) Congratulations, coach!

CALLING ALL CAPTAINS . . . Twilight Golf League Captains, that is! Pat Nagy, League Director, is calling a meeting for Wednesday, October 4, 3:30 P.M., Conference Room A. (Gads! How efficient can you be?)



“The kid isn’t fast, but nobody will try to block his punts.”

ENERGY TIP . . . If you cook with electricity, get in the habit of turning off the burners several minutes before the allotted cooking time. The heating element will stay hot long enough to finish the cooking for you without using more electricity. (Easier on your electric bill, as well.)

DON’T FORGET TO APPLY . . . Any employee or child of an employee who will be eligible to enroll in college in the Fall of next year has the opportunity to apply for the Verne E. Minich “Founder” Scholarship (at Purdue University) or the Otto A. Pfaff Scholarship (at the University of Notre Dame). Application must be made before JANUARY 1. Check with our Personnel Office. Field personnel may write for further information. Scholarship winners receive \$1500 per year toward their school expenses.

SHUT OFF TO SHUT UP . . . Thomas Edison was introduced by a loquacious speaker who raved about the inventor’s creative ability. The speaker was particularly long-winded about Edison’s talking machine.

When the speaker finally shut up and sat down, Edison smiled and said: “I thank the gentleman for his kind remarks, but I must insist on a correction. God invented the talking machine. I only invented the first one that can be shut off.”

There is a U in every excUse.

Published weekly by and for employees of Materials Cleaning Systems Division.

Wheelabrator-Frye Inc.
400 South Byrkit Avenue
Mishawaka, Indiana 46544

Del Tenney, Editor Ext. 397