

# the Wheelagram



Materials Cleaning Systems Division  
**Wheelabrator-Frye Inc.**

VOL. III NO. 31

AUGUST 17, 1979

## IT'S THE GOOD OLD SUMMERTIME . . .



**AND — TOMORROW IS THE DAY!** The day, that is, for the annual Wheelabrator picnic. If you haven't picked up your ticket — only \$2 per family — today is absolutely your last chance. See your area AA rep. The festivities begin at Noon, Wander Conservation Club. Don't miss out on the fun!

**THE PROJECT'S PROGRESSING . . .** For those of you who have seen our Personnel Director, **Karl Zimmer**, scurrying between plants over the past few months with stacks of folders, you're probably aware of the progress being made on the position description phase of our Salary Administration Update Project. This portion of the project is rapidly reaching an end and should be totally completed within the next few weeks.

The area compensation survey is already underway and the position evaluation process will be commencing shortly.

Although we've had to make some modifications and adjustments to our original schedule, we're still confident of a January 1, 1980 completion date.

**MARKING 20 YEARS** of company service this week are: **Keith Redman**, Maintenance Pipe Welder-Plant I (August 17); **Joseph Vogel**, Material Handler-Steel Fabrication (August 17); **Gene Rumpfelt**, Foreman-Assembly (August 18) and 15 years of service today for **Verlin Kilburn**, Utility Man-Plant 2. Congratulations!

**PROMOTIONS . . .** Congratulations to: **Willa Mae Parker** promoted from Stenographer-Marketing to Secretary-Manufacturing Engineering; **Ron Slater**, from Engineer to Lead Engineer-Standard Blast Equipment.

**NEW FACES . . .** Welcome to: **Robert L. Coleman**, Arc Welder-Steel Fabrication; **Gary Young**, Arc Welder-Steel Fabrication; **Lee J. Pruitt**, Service Engineer-Southern Region; **Virginia L. Fardulis**, Repair Parts Service Clerk-Stores.

**WE NEED YOUR INPUT . . .** Wheelabrator has always been, and continues to be, an innovative, imaginative company.

We cite some examples from over the years about which someone probably said, "It can't be done," (and sometimes they were right!):

Using a wheel to replace compressed air for throwing abrasive; deflashing plastics; portable Wheel Blast Machine; use of steel shot as a carrier in Xerox copy machines; and cleaning raw eggs in the shell — (we tried!).

Now we are looking for **new ideas** — **new applications** and **new markets** for Wheelabrator equipment and products — **new products** which would be compatible with our overall company activities.

No idea is too far out — just so it has **some** relationship with what we do now. We need your input **NOW!** Send your **NEW IDEAS FOR THE 1980's** to Marketing Manager **Bob Riordan** by August 31!

**RECENTLY JOINING** the Mishawaka-based APC Fabric Filter Research & Development group is **George L. Brodmann**. George has been named Manager, Fabric R&D for the APC Division. He comes to Wheelabrator from the Chemicals Division of PPG Industries. George, welcome to Wheelabrator and Mishawaka!

**THE "AVERAGE" TAXPAYER'S BURDEN . . .** Recently, *Monthly Tax Features*, a publication of the Tax Foundation, Inc., reported that the average American worker contributes 34.3% of earnings to pay his share of the total 1979 tax bill.

The following table is based on the Tax Foundation's estimates as of April, 1979:

### TAX BITE IN THE EIGHT-HOUR DAY

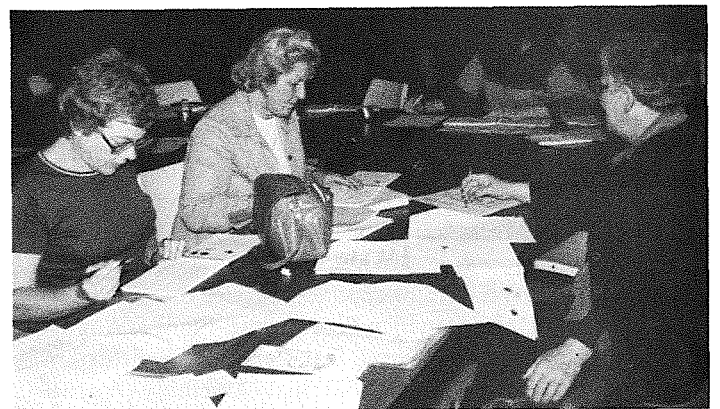
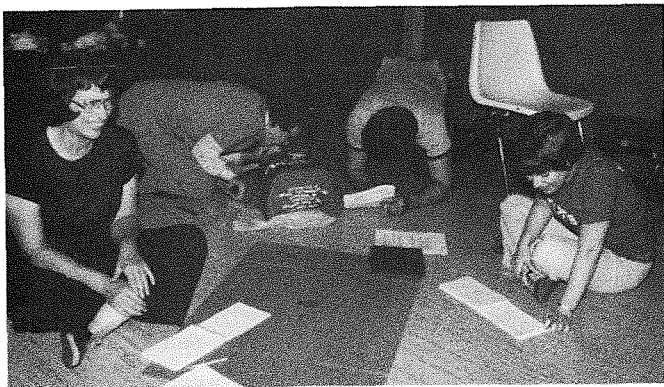
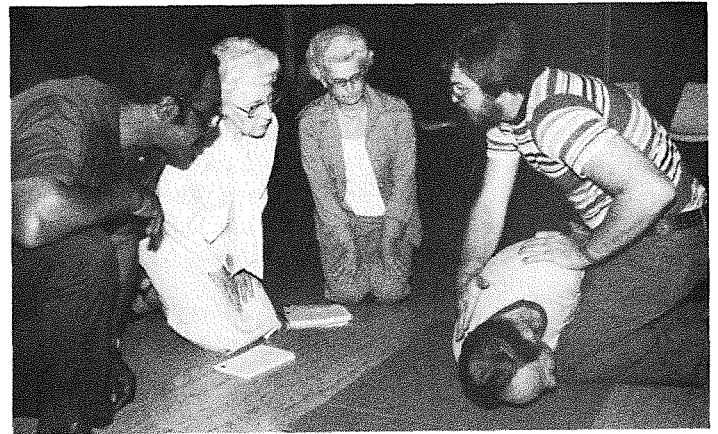
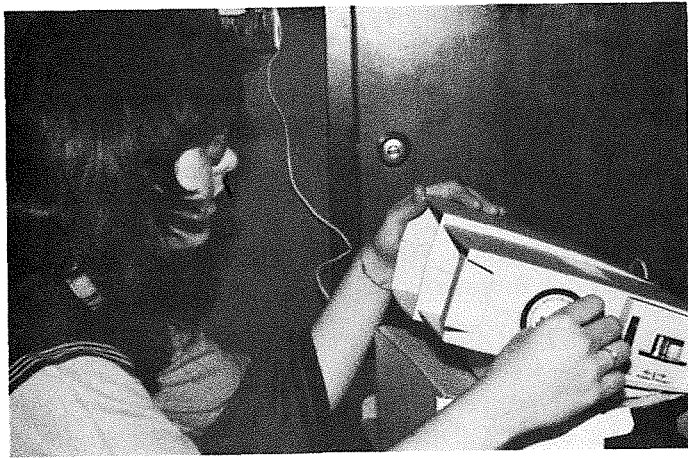
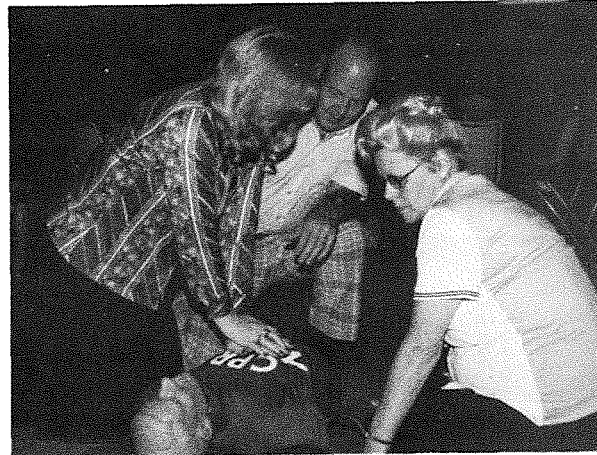
Tax, total	2 hours 45 minutes
federal	1 hour 47 minutes
state and local	58 minutes
Food and beverages	1 hour 3 minutes
Housing & household operation	1 hour 27 minutes
Clothing	23 minutes
Transportation	42 minutes
Medical care	30 minutes
Recreation	19 minutes
All other*	51 minutes
<b>TOTAL</b>	<b>8 hours</b>

\*Includes consumers expenditures for items such as personal care, personal business, private education, and savings.

THE SECOND WAVE of Julianna Club members recently completed instruction in CPR (Cardio Pulmonary Resuscitation). This lifesaving instruction takes no more than nine hours to complete, including at home reading and classroom participation.

Anyone interested in participating (on their own time) in future classes, contact **Dale Bressler**, CPR Co-ordinator, on ext. 413, or our Personnel Department.

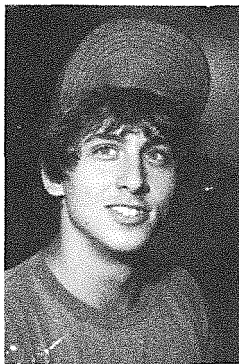
WFI personnel certified as CPR Instructors include: **James Brown, LeRoy Danzy, John Hall, George Smith, James Smith, and Norm Pratt.**



Employees certified in CPR include: Shirley Baldwin, Ernestine Banes, Ralph Banes, Ronald Barton, John Bergan, Paul Berndt, Ernie Bevilhmyer, Joseph Bidlack, Millie Boehlein, Ralph Breden, Fred Britton, James Brock, Lucy Brunson, John Canarecci, Ray Celie, Jr., Cheryl Chance, Julia Ciszczon, Roger Coleman, James Daugherty, Archie Davis, Lourdes Dingman, Edna Fleming, Dennie Garrett, James Griffin, Bill Geist, James Hall, Laurie Hardy, Kenneth Heston, Andrew Harvey, Gary Hurst, George Imus, Marilyn Johnson, Hazel Jones, Donald Karnes, Tom Kirkpatrick, Fred Keip, Gene Kempner, William Klein, Clara Kovach, Bud Kyle, Dave LaPlace, Rena Lester, Hugh Lowry, Janice Martynowicz, Jackie Mazurkiewicz, James McClish, John McKenzie, John Medich, Don Milzarek, John Mumby, Alta Myers, William Nutting, Calvin Orbin, Sherry Payla, Lorrie Pfender, Margaret Ping, Richard Pompay, Roman Popielski, Mary Lou Rethlake, William Roe, Ruth Rohleder, Gene Rumfelt, Matt Rutkowski, Karen Sikora, Otis Sizemore, Richard Skiles, Al Skwiercz, Al Slater, Glover Smarr, Wanda Stutzman, Dean Swingle, Ed Tesmer, James Trotter, Kelly Tucker, James Turza, Mike Unruh, Dan Van Den Borre, Max Vena, Jean Vergon, James Vollman, Roger Wasson, Thomas Wawrzynski, Arthur Webber, Jo Wiendels, T. C. Williams, Pat Woodruff.

PLANT 2's SECOND SHIFT CREW ...

(Drawing by Co-worker David M. Gryp)



DAVE GRYP, Material Handler-Plant 2, leaves Wheelabrator next week to return to Indiana State University where he is enrolled as a sophomore, majoring in Commercial Art.

Dave is the son of TED GRYP, Overhead Crane Operator-Assembly.

Thanks for sharing your talent with us, Dave.

# On The SPORT SCENE...

**A CORRECTION, IF YOU PLEASE!** It has come to our attention that the annual Twilight Golf League Outing will be held **Sunday, August 26**, not Sunday, August 16, as previously reported in **Wheelagram**.

Make up your foursome and call in your reservation by **Tuesday, August 21**, to **Pat Nagy**, ext. 225. \$10 fee for league members, \$11 fee for non-members.

**LAST CALL FOR CALL OUT ...** The Wheelabrator Trap Club is having its 1979-80 season call out this **Sunday, August 19, 10 AM, Elkhart Shooting Center**.

**New Shooters are welcome!** No experience necessary. Guns and ammunition are available. Reloads (12 ga.) will be sold at \$2 per box. For more info, contact: **Otis Sizemore**, President; **Walt Meckley**, Vice President; **Mike O'Connell**, Secretary; **Kelly Tucker**, Treasurer.



**STRIKES & SPARES ...** The WFI Tuesday Night Bowling League will hold a meeting at **Regal Lanes, Tuesday, August 21, 7 PM**. League rules and plans for the coming season will be discussed.

All league members are invited to attend the meeting and have a pre-season warm-up — you can bowl 3 games for \$1. The season will begin on Tuesday, September 11. Two more teams are needed to complete the league. Interested? Contact: **Gene Kempner, Bill Fore** or **John Teeters**.

**HITTING THE LINKS ...** Moving into first place after ten rounds of play is Team 8 (**B. Shultz, J. Ankney, J. Stull, B. Truex**). First Team Low Net (130) Team 8; First Team Low Scratch (160) Team 12 (**J. Baker, R. Hullinger, S. Sindors, L. Cookie**); Individual Low Net (28) **H. Breske**; Individual Low Scratch (33) **H. Breske**.

**DAWN GOLF LEAGUE OUTING ANNOUNCED ...** The Dawn “swingers” will hold their annual outing **Friday, August 31, Brookwood Golf Course, Buchanan, Michigan**. Fees are as follows: Members, \$12; retirees and non-members, \$14; guests, \$16. (This price includes your greens and cart fee, steak dinner and liquid refreshment, prizes.) Fees must be paid by **Friday, August 24**. Contact: **Charlie Burrow** (3 PM-Midnight, Foundry); **Ralph Henzel** (Second Shift, Maintenance) or **Mike Hillebrand** (11 PM-7 AM, Plant 2).

Published weekly by and for employees of Materials Cleaning Systems Division.

**Wheelabrator-Frye Inc.**  
400 South Byrkit Avenue  
Mishawaka, Indiana 46544

Del Tenney, Editor ..... Ext. 397