

the Wheelagram



Materials Cleaning Systems Division
Wheelabrator-Frye Inc.

VOL. III NO. 4

JANUARY 26, 1979

SMILE . . . YOU'RE ON OUR CANDID CAMERA . . .



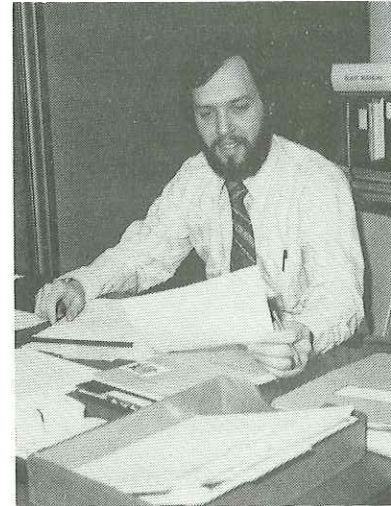
Actually, the retiring officers of the Julianna Club posed for the above shot — although they worked together as a group unfortunately, for our photographer, they did not move as a group. A "LARGE" THANK YOU to (l. to r.): LUCY SEIDER, Secretary; DEBBIE LOCSI, Advisor; MARY LOU RETHLAKE, President; BARBARA HILLEBRAND, North Office Building Board Member; RUTH ROHLEDER, Treasurer; MARGARET PING, Vice President; LAURIE HARDY, Factory Board Member and RENA LESTER, South Office Building Board Member. A special verbal bouquet of roses to Mary Lou who has been at the helm of the organization for the past two years.

Congratulations to the incoming officers: MARGARET PING, President; WANDA STUTZMAN, Vice President; JACKIE MAZURKIEWICZ, Secretary; PATSY BECHER, Treasurer; ELAINE McCOOL, North Office Building Board Member; LORRIE PFENDER, South Office Building Board Member and LAURIE HARDY, Factory Board Member.

TWO ASSEMBLERS, who had been on sick leave, have recently retired. Our best wishes and good luck to **Harold Hummell**, Assembler "A," with over 22 years of company service and **Calvin Myers**, Assembler "A," with 28 years of service.

CELEBRATING 15 years of company service this week is **Edward F. Voorde, Jr.**, Electric Melt Furnace Operator-Plant 2. Congratulations, Ed!

A RECENT HARRIS POLL showed that 64 per cent of workers would be willing to accept smaller pay raises if they had some assurance the cost of living was being brought under control.



MARKETING SERVICES newest member, **Paul Noeth**, is Wheelagram's first contributing editor (see "center-fold"). Most recently affiliated with North American Signs, South Bend, as an Illustrator/Designer, Paul has had an extensive background in advertising and design.

Paul and his wife, Gail, reside in Mishawaka with their baby daughter, Sara. When not "contributing" here at WFI, Paul has let it be known he enjoys photography, camping and house restoration.

SPEAKER EXTRAORDINAIRE **Hardy Stebbins**, Manager-Blast Equipment Sales, addressed the Annual Award Dinner of the Indiana Life Underwriters. Subject: "Sales — A Job and An Obligation!"

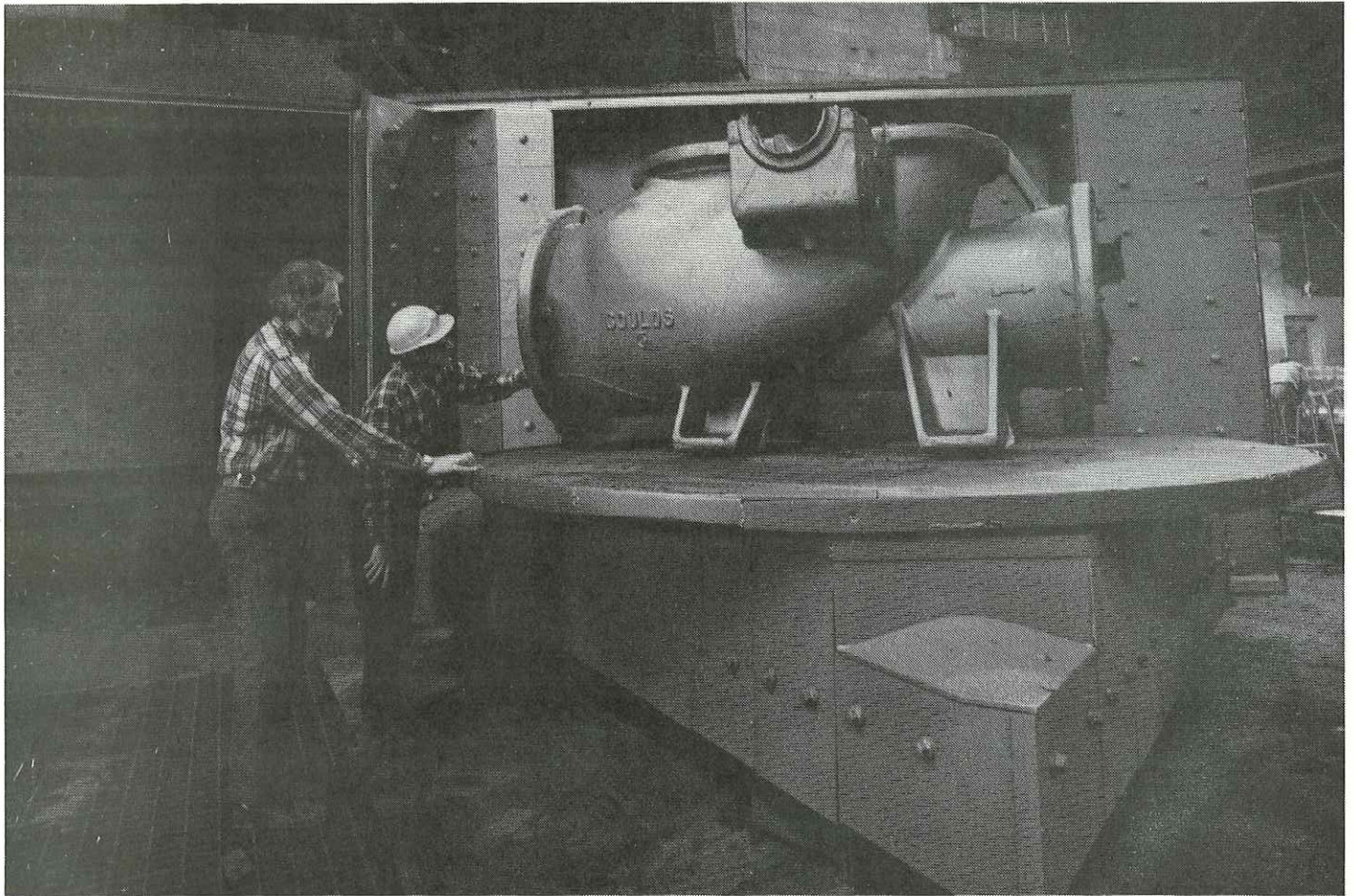
LET'S DIG IT! Deep beneath Indiana's normally shallow strip mine fields lies — more coal. State and federal geologists discovered unexpected rich new veins during a survey which has involved the drilling of eight holes so far. The scientists, based at Indiana University, said many of the rich veins were between 500 and 1,000 feet deep.

BUS IT to Chicago's Drury Lane Theater **Saturday, February 17**, with the rest of the gang for dinner and the production of "Love On the Cusp" starring Chuck Connors. Sign up with your area AA rep — only \$20 per couple.

COLLEGE GRADUATES entering the labor market between now and 1985 face a one-in-four chance that they'll have to take a job traditionally filled by people with less than a college degree, says the U.S. Labor Department.

Castings, Environment, and Profit Improve . . .

Wheelabrator's SANDSAVER™ SYSTEM pays off at Goulds Pumps



Foundry Manager Jack Enright and Technical Director Bob Cologgi examine a large pump housing, cast in no-bake sand that was reclaimed by their Wheelabrator Sandsaver Module.

Since its pre-Civil War founding, Goulds Pumps, Inc.'s business has been the design, manufacture, and marketing of centrifugal pumps. Headquartered in Seneca Falls, New York, Goulds is known as an innovator for its product concepts and manufacturing quality.

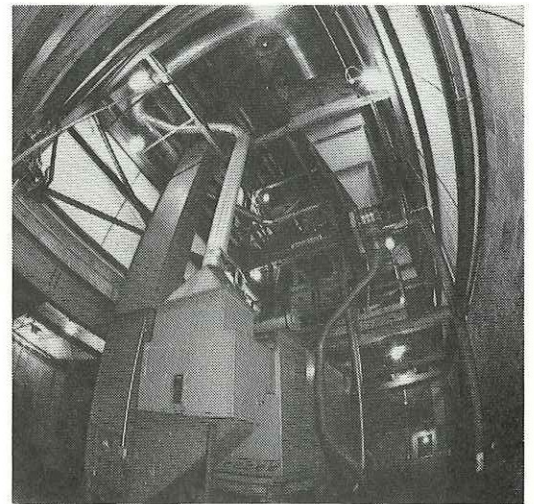
Goulds manufactures pumps that bring pure water to cities, that irrigate desert wastelands, pumps that are indispensable to the petro-chemical, paper, steel and power industries. Goulds pumps are capable of moving from one gallon to 75,000 gallons of fluid per minute and are of such high quality that they meet the tough standards for nuclear power plant service.

To maintain its corporate goal of "building quality in quantity," Goulds decided to convert its foundry from green sand to no-bake molding for its castings from 250 lbs. to 15,000 lbs. No-

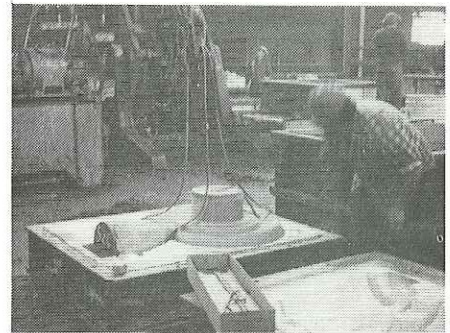
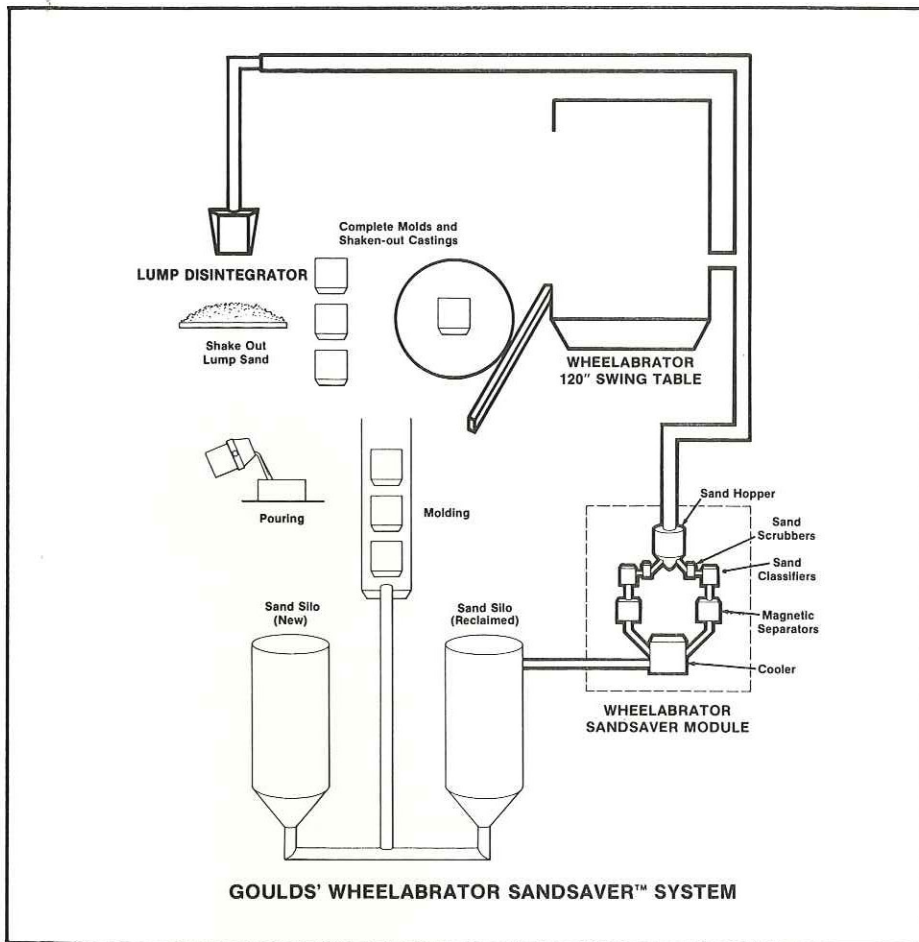
bake is simply an air-setting, chemically bonded molding process, with the advantage of being able to produce very stable molds with less smoke, fume, noise and material handling equipment.

Wheelabrator engineers designed a sand reclamation system that was essential in making Gould's no-bake molding economical. Based on proven Wheelabrator principles a special heavy duty 120" Swing Table was installed with twin 96" CFS separators to handle the expected heavy sand load. Casting cleaning time dropped from 4 hours with an outdated high pressure water blasting unit to 20 minutes with the Wheelabrator, while at the same time removing the spent mold sand for reclamation.

Linked to a 20 ton per hour Wheelabrator Sandsaver module, the separated sand is "double scrubbed" removing unwanted binder and



Inside the sand reclamation building, looking up at the Sandsaver, sand cooler in the foreground.



Cores, made of new sand, provide the necessary makeup sand in the system.



The foundry reports it is using 100% reclaimed sand for its molds.

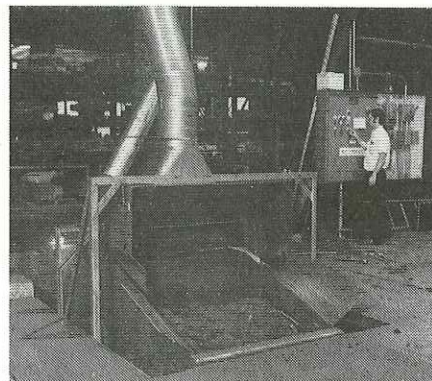
conditioning the sand for reuse. The scrubbed sand moves through an air-wash unit that removes organic and sand fines, followed by a magnetic separation process to remove metallic fines. The properly sized and reconditioned sand is returned to the storage silos.

A 10 ton per hour independent lump disintegrator was supplied by Wheelabrator to prepare shakeout lumps for reclamation by the same Sandsaver Module.

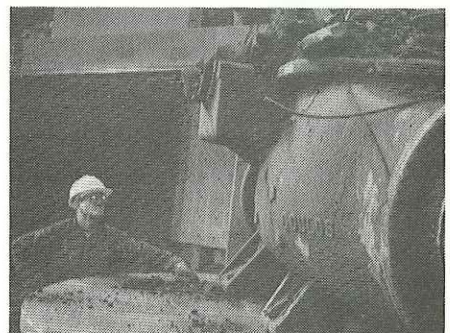
The entire system is ventilated through a Wheelabrator Ultra-Jet® air pollution control unit. This environmentally sound practice virtually eliminates all dust and contamination created in the cleaning and reclamation practices.

Goulds' Wheelabrator system is an operating success with over 700 tons of castings as proof. Mr. Bob Cologgi, Technical Director at Goulds, reports that the new casting process has resulted in a more accurate casting of less weight, with a much lower scrap

loss. "Overall," says Mr. Cologgi, "I'd say we pour a better casting at a lower cost today by using no-bake molds made of reclaimed sand."



Extremely large molds, such as the 84 x 138 x 54/54 are first stripped apart, the sand lumps disintegrated to grain size and then conveyed to the Sandsaver.

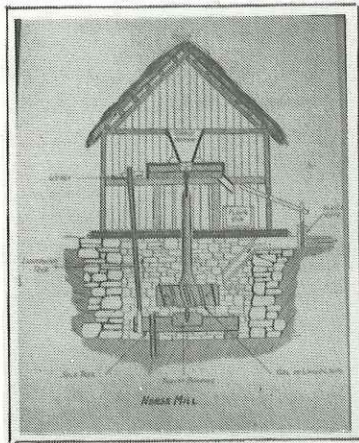


Typical pump housing, containing four tons of mold and core sand is placed on the table. Cleaning cycle: 20 minutes versus the former 4 hours for hydroblasting.

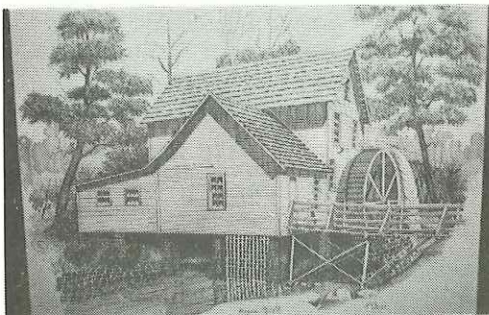
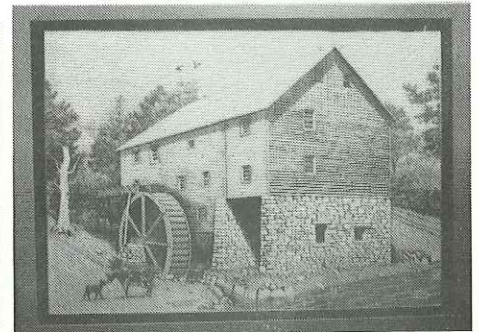
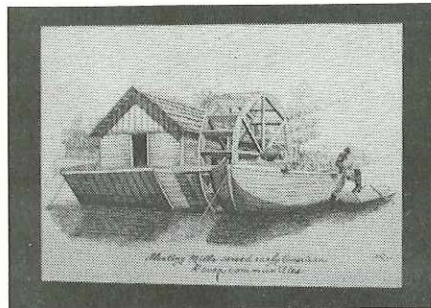
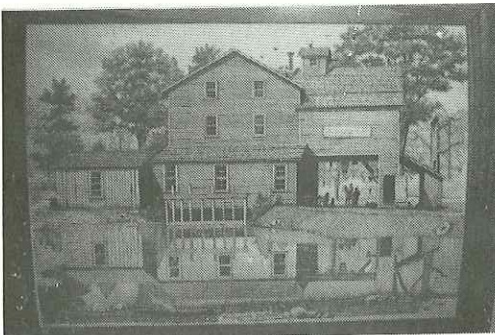
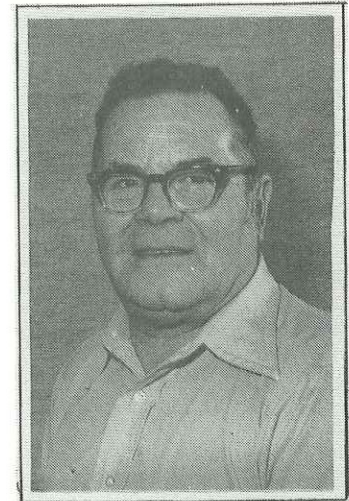
BILL GEIST AND HIS ONE-MAN SHOW . . . During the month of January, visitors to the Mishawaka Public Library had the opportunity to view and enjoy the pen and ink drawings and photographs of WFI's Francis "Bill" Geist at his one-man show. Bill has agreed to the Art Committee's request that he share this exhibit with his co-workers at MCSD. Starting sometime in February we will

have only to travel to the North building for our private showing.

Bill, a welding superintendent, has 38 years of company service. He has worked in arts and crafts for most of his life with his formal art training being limited to only two years in high school. (We understand that his creative talent extends to the kitchen, as well.)



Bill works in most media but prefers pen and ink. This was developed through his admiration of Civil War artists. His favorite subject matter is old structures and their role in man's heritage, particularly covered bridges and old water-powered mills. He and his wife have traveled extensively throughout the United States and he has photographed, for future pen and ink sketching, some 260 covered bridges and 125 water-powered mills since the mid-50's.



ON THE SPORTS SCENE with the Tuesday Bowling League — January 23 results: "Checkmates" (**R. Rothy, C. Barnes, R. Barrier, J. Jenczewski, H. Mayes**) are in first place with 53 wins and 23 losses. Team High Game (1023) Balcrank (**R. Pflugner, W. Young, J. Downing, O. Campbell, D. Ansbaugh**). Team High Three Games (2851) South Shipping (**D. LaPlace, B. Koontz, L. Cookie, M. Rutkowski, H. VanWaeyenberghe**). Individual High Single Game (224) **H. VanWaeyenberghe**. Individual High Three Games (632) **D. LaPlace**.

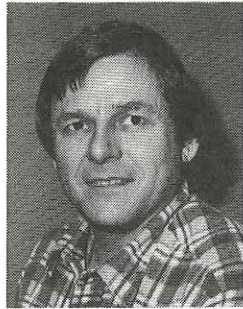
ATHLETIC ASSOCIATION'S Annual Bowling Tournament rescheduled for this **Sunday, 11 A.M., Regal Bowling Lanes**. Check out the action!

Published weekly by and for employees of Materials Cleaning Systems Division.

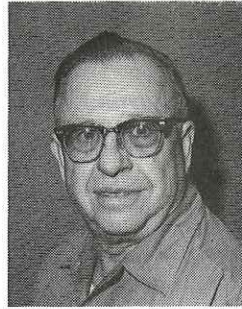
Wheelabrator-Frye Inc.
400 South Byrkit Avenue
Mishawaka, Indiana 46544

Del Tenney, Editor Ext. 397

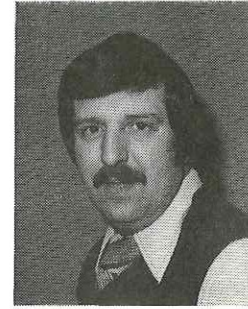
INTRODUCING THIS YEAR'S ATHLETIC ASSOCIATION REPRESENTATIVES:



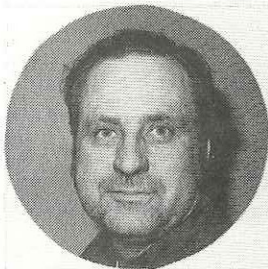
JOHN MUMBY,
Assembly
President



KARL ANDREWS,
Machine Shop
Vice President



LARRY BAKER,
Second Floor Offices
Secretary-Treasurer



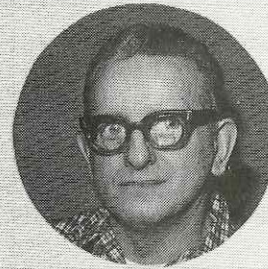
BEN DeLARUELLE,
Plant 2



RAY LaDOW,
South Shipping



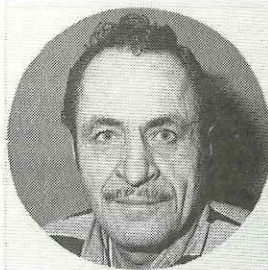
BOB WISE,
Plant 2



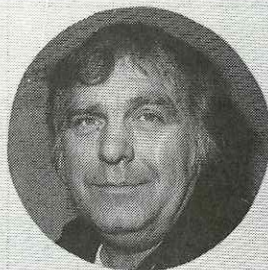
CLEM SNIADOCKI,
Steel Shop



RAY ARTUSI,
Balcrank and Stockroom



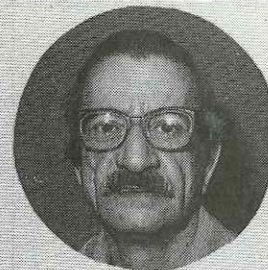
RAY STODDARD,
Foundry



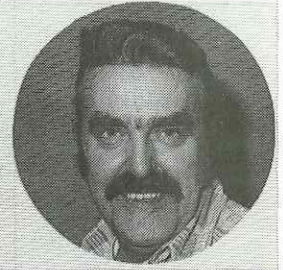
DON STEPHENS,
Maintenance



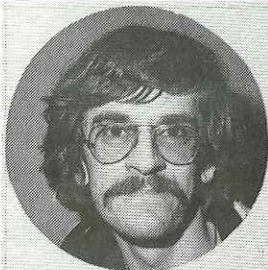
DON SUSAN,
Steel Shop



PAT TRIMBOLI,
Machine Shop



BILL ELING,
R & D



GARY VanBELLEGHEM,
Foundry



BOB ZILIAK,
First Floor Offices



BRUCE McCONAHAY,
Steel Shop



EARL SORSBY,
Plant 2



MIKE O'CONNELL,
Assembly

The Wheelabrator Athletic Association sponsors a variety of activities throughout the year, including the annual summer favorite — the family picnic. These men are responsible for planning and organizing this year's calendar, as well as being on hand in their area to serve you!

ON THE SPORTS SCENE with the Tuesday Bowling League — January 30 results: "Checkmates" (**R. Rothy, C. Barnes, R. Barrier, J. Jenczewski, H. Mayes**) continue to hold the first place lead with 57 wins, 23 losses. Team High Game (967) and Team High Three Games (2832) "Checkmates." Taking Individual High Single Game (222) was **B. Farrell** and Individual High Three Games (578) to **H. Mayes**.

STRIKES AND SPARES and lots of fun for those participating in the Athletic Association's **Annual Bowling Tournament**. The second half of the action — single and double events — takes place this **Sunday, 11 A.M.** at **Regal Bowling Lanes**. Check out the action!

THE BIGGER YOUR HEAD, the easier it is to fill your shoes.