

the Wheelagram



Materials Cleaning Systems Division
Wheelabrator-Frye Inc.

VOL. III NO. 9

MARCH 2, 1979

AFS RESEARCH PATRON . . . For seven decades our division has been a major supplier to the metal casting industry. During this period our company has been a recognized leader of the industry and an active participant in its professional organization — The American Foundrymen's Society.

Recently, Ashley B. Sinnett, Executive Vice President of the AFS, was in Mishawaka to present a plaque designating our division Research Patron of the society — the highest classification of membership in the AFS.

Through our membership we will directly promote the research activities of the society in funding projects in problems related to metal casting technology and the expanded environmental control program.

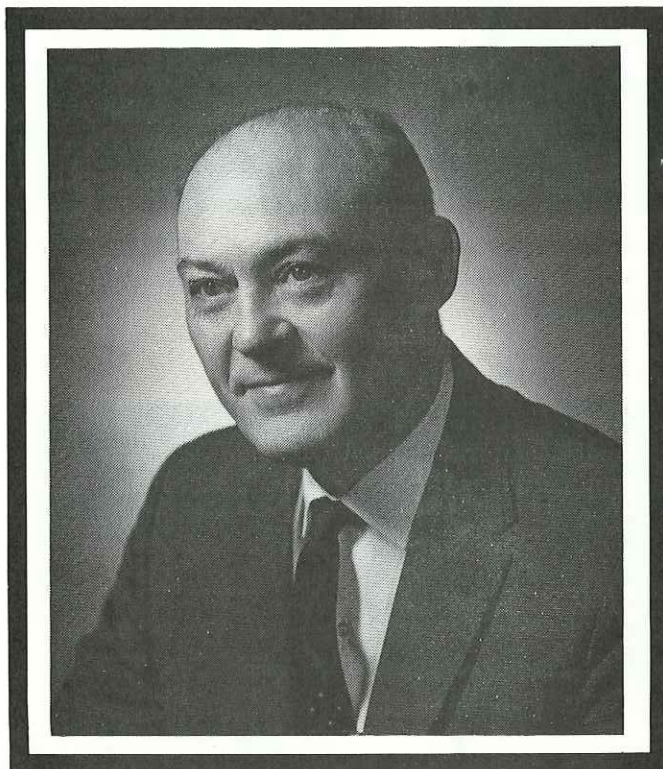


After the plaque hanging ceremony, Sinnett (l) confers with Joe O'Callaghan (center) division President and General Manager, and our Director of Research and Development, Ray Leliaert. (Ray, who has served as a member of the AFS Research Board, as well as Vice Chairman of its Sand Reclamation Committee, has just been appointed Chairman of the Research Board. Congratulations, Ray!)

The **Scholarship Committee** of the **Julianna Club** is pleased to announce that funds have been made available for the awarding of a scholarship for 1979. This will establish a fourth scholarship.

Applications must be received by April 16, 1979. If you're interested, contact the personnel department for your application. No applications will be accepted after this date.

The scholarship will be given to a high school girl graduate who is (1) daughter of any Wheelabrator employee of the Mishawaka plant or office, or (2) Wheelabrator girl or woman employee of the Mishawaka plant or office. (The applicant must be entering her freshman year.)



JOHN C. STRAUB, Chief Research Engineer from 1944 to 1966 and later a shot peening consultant until his retirement on December 31, 1971, died in Florida on February 28.

John was acknowledged throughout the industry as the foremost expert on the influence of shot peening on fatigue strength as affected by various factors in the process. He was the author of the only technical book written on this subject. In addition, he published numerous technical articles on the subject and actively participated in national technical organizations.

His contributions to the success of our organization are still being reflected in the large number of Wheelapeen installations throughout the country used for shot peening aircraft and automotive components.

CONGRATULATIONS to **Herman DeLaurelle**, General Order Filler and Checker-Stockroom, who marked 15 years of Wheelabrator service February 25.

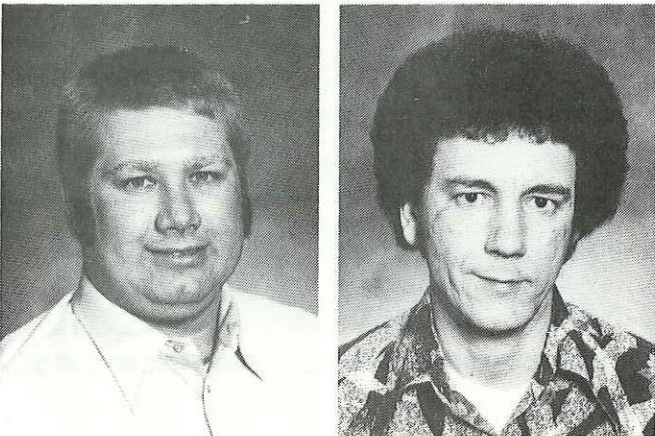
NEW FACES . . . Welcome to **Arthur Samora**, Mail Clerk-Office Services; **Kenneth Deka**, Programmer II-MIC. And, welcome back to **Barry Selack** who has returned to our Southern Region as an Equipment Sales Engineer.

VAN BELLEGHEM RETIRES . . .



The Foundry crew gathered to wish CHARLES "CHUCK" VAN BELLEGHEM well on the occasion of his retirement. Chuck, Heat Treat Control, retired Wednesday with 38 years of company service. Chuck, all good wishes for a long and happy retirement!

PLANT 2 MELTERS HONORED . . .



CHARLES "CHUCK" MANN (l), three-time winner of the "Melter of the Month" contest has been named "Melter of the Year" for '78. Chuck is the first recipient of this award. GERALD "GERRY" DAVIS (r) starts the new year off right being named January "Melter of the Month." Gerry, a third shift melter, has over 12 years of company service. Congratulations to you both!

SPRING VACATIONERS might be interested in picking up the '79 membership guide to Walt Disney's Magic Kingdom Club, available in our Personnel Office.

TOMORROW NIGHT'S THE NIGHT! Between the hours of 7 P.M. and 1 A.M. at Mishawaka's B. K. Club, Wheelabrator Athletic Association's (employees only) Spring Stag will be in progress. Check out the fun!

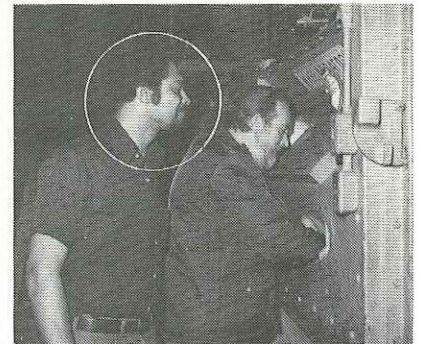
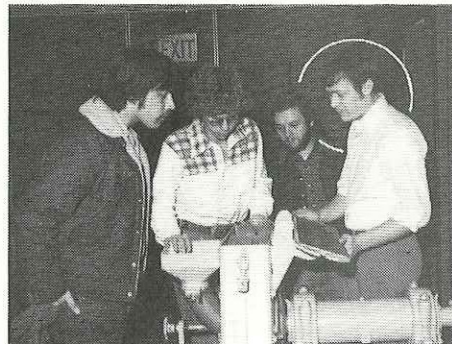
NO OPPORTUNITY is ever lost; someone else picks up those you miss.

Published weekly by and for employees of Materials Cleaning Systems Division.

Wheelabrator-Frye Inc.
400 South Byrkit Avenue
Mishawaka, Indiana 46544

Del Tenney, Editor Ext. 397

IVY TECH STUDENTS TOUR MCSD . . .



KARL ZIMMER (photo, left), Personnel Director, briefs Ivy Tech students on "the Wheelabrator Way," prior to their tour of our facility. Trainees DAVE WICKHAM (photo, center) and LLOYD VAUGHN, (photo, right) share their Wheelabrator expertise with Ivy Tech classmates. (Lloyd is training as a Machine Repairman and Dave as a Millwright.)