

# the Wheelagram

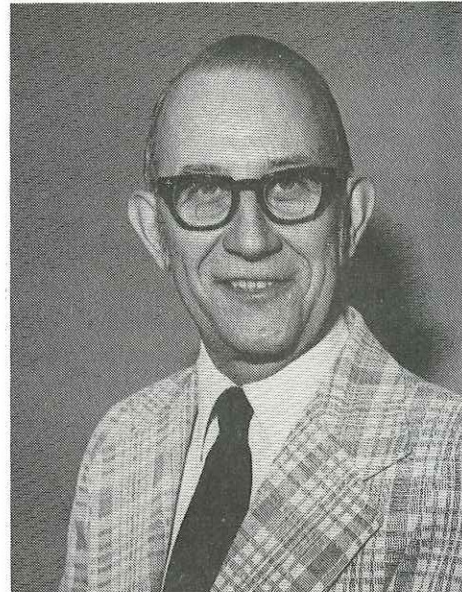
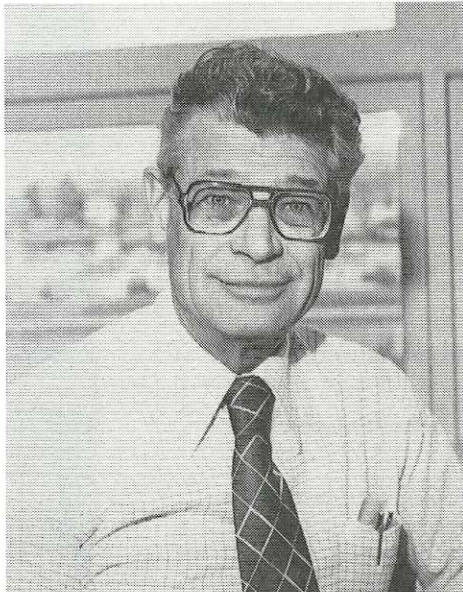


Materials Cleaning Systems Division  
**Wheelabrator-Frye Inc.**

VOL. III NO. 16

APRIL 20, 1979

## REPRESENTING 80 YEARS OF ENGINEERING SERVICE . . .



This week marked the celebration of two 40 year anniversaries in our Engineering Department. Congratulations to our two 40 year men — **HOWARD SEELEY (l)**, Engineer and **WARD CORRELL (r)**, Manager of Engineering Services.

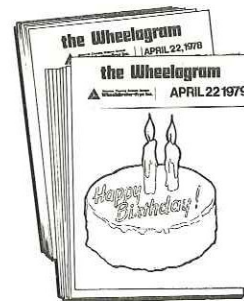
CELEBRATING 20 years of company service this week are: **Robert K. Trueax**, Supervisor, Inventory Control-Production Planning and **Kenneth J. Oakley**, Assembler AA-Assembly. Congratulations Ken and Bob!

NEW FACES . . . Welcome to **Ron Myers**, Account Sales Engineer-Southern Region. Welcome back to: **John Pokorski**, Project Manager-Engineering, **Dennis Somerville**, Draftsman-Engineering.

ATHLETIC ASSOCIATION REMINDERS . . . Don't be a party pooper! Attend the **Mr. & Mrs. Smoker** tomorrow night at the BK Club. The fun begins at 7 PM — see your area AA rep for your tickets now — only \$1 per person! Last call for those interested in joining the Sports Illustrated Court Club at a reduced rate. Check with your area AA rep.

TEE OFF TIME . . . Weather permitting, WFI golfers participating in the Twilight Golf League will tee off April 30 and May 2. **Pat Nagy**, League Director, is reminding all Captains to please have their monies in on or before April 23.

WE'RE THRIFTY! . . . WFI'S Employees Federal Credit Union is a recipient of a 1978 Thrift Honor Award presented by the National Credit Union Administration. This award is given annually to the top ten to fourteen percent of those federally chartered credit unions that have shown the largest average monthly rate of increase in total savings.



TO OUR "SUBSCRIBERS": As we are about to celebrate the second birthday of *Wheelagram*, we would like to express our thanks for your enthusiasm, ideas, and most of all — your cooperation throughout the year. The time you have all given from your busy schedules helped to make our job easier!





Jean Seybold



Betty Stiver



Joan Schue



Lucy Seider



Jean Vergon



Ruth Rohleder



Connie Appel



Jo Weindels



Clara Kovach



Norma Crider



Nancy Shaver



Ann Barilich



Lorrie Pfender



Mary Lou Rethlake



Dora Beard



Betty Honald



Wanita Carnes



Marcia Ganyard



Janice Martynowicz



Delores Burtsfield



Wanda Stutzman



Sherry Barrett



Florence Duncan



Mary Jo Acrey



Debbie Locsi

### WFI SECRETARIES — WE SALUTE YOU!

The National Secretaries Association defines a secretary as an "... executive assistant who possesses a mastery of office skills, who demonstrates ability to assume responsibility without direct supervision, who exercises initiative and judgment, and who makes decisions within the scope of assigned authority."

The Merriam-Webster dictionary notes that the word comes from the Latin **secretum** — the word secret is quite obvious — and a secretary is "one entrusted with the secrets or confidence of a superior."

But any boss fortunate enough to have a secretary knows that person is a great deal more.

Just inspect any secretary's desk. In addition to typewriter and paper and assorted pencils plus pens and clips and phone, the desk is a treasure trove of aids — all designed to make the executive function. From tape measures and screw drivers and airline schedules to report forms, change for the coffee machine, the secretary is the oil that greases each VIP's wheels. Duties range from opening mail, making appointments, solving routine problems, and filing and retrieving vital business data to taking dictation and typing and keeping track of the ever-changing daily schedule, as well as knowing which calls to pass on to the boss and which to handle alone in best executive fashion. Whew!!

In honor of National Secretary's Week — April 22-28 — this word of appreciation and thanks — we salute you!

**Editor's Note:** Time and space did not allow *Wheelagram's* Candid Camera to capture on film all our secretarial staff — photos on hand were pulled from our files, some additional ones were taken with no advance notice. Thanks to these gals for representing all of you!