

# the Wheelagram



Materials Cleaning Systems Division  
**Wheelabrator-Frye Inc.**

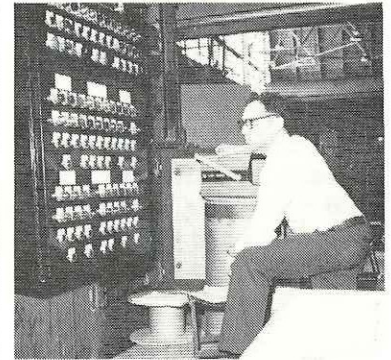
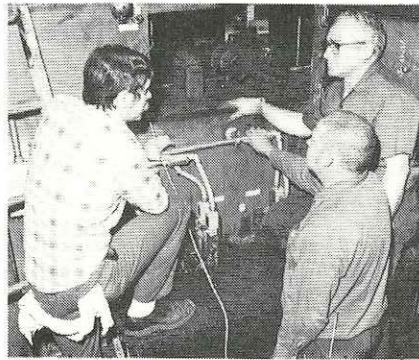
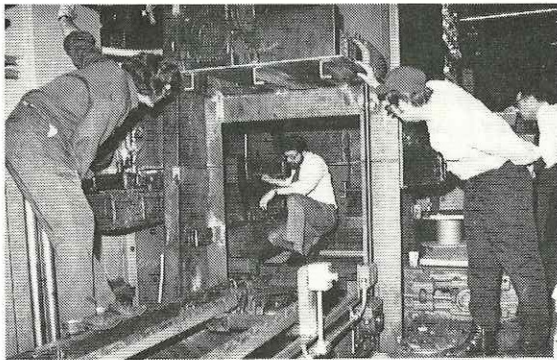
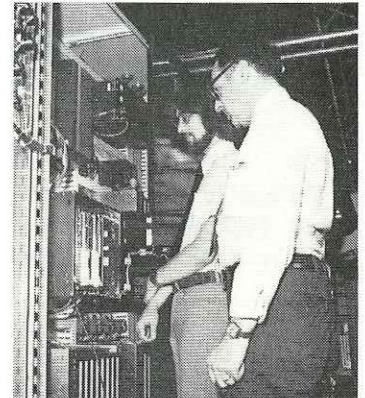
VOL. III NO. 22

JUNE 1, 1979

**FIRST OF FIVE . . .** Thanks to teamwork and holiday overtime, the first of five stress peening machines sold to Chevrolet-Livonia is being prepared for shipment.

Peening leaf springs at a rate of 400 fixtures per hour, the machines feature a new concept whereby two springs per fixture are stress peened simultaneously.

(photo right) Preparing for a dry run are Senior Engineer WILL LAWRENCE and Senior Draftsman TERRY GASKILL from Electrical Engineering. (bottom left) "How does it look?" ask Electricians FRED BRITTON and LOSON YOUNG of BOB WATKIN, Project Manager for Special Blast Equipment. (middle) Assembler JIM SWITALSKI, Welder BOB WATTS and Assembler HERM MILLER "talk it over." (right) Final check by Will.



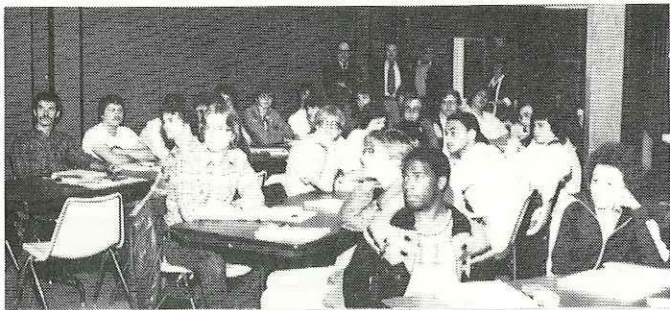
## TEAM 8 TAKES FIRST PLACE . . .



First place in the Safety First contest for the month of March was won by TEAM 8. Team 8 is comprised of personnel from Areas 1541, Superintendent's Office; 1543, Production Plant #2 and 1546, Metal Engineering.

## WELCOME TO WHEELABRATOR'S WORLD . . .

Two orientations were conducted last week for those students employed for the summer in our shop and office areas. To all our summer employees — good luck and work hard!



**JACK JOHNSON**, Electric Melt Furnace Operator-Plant 2, marked 20 years of company service this week; while **Henry Makowski**, Sweeper/Laborer-Assembly, chalked up 15 years of service. Congratulations, Hank and Jack!

**CONGRATULATIONS TO . . . Phil Diehn** named Lead Engineer of the Precision Finishing Product Engineering Division. Phil joined WFI in '69 as a Draftsman and was promoted to Senior Draftsman. In '74 he entered Louisiana State University where he earned a B.S. degree in Mechanical Engineering and returned to us last June as a Senior Designer.

**Will Glusac** has been promoted to Director of Product Accounting. Will will have the overall responsibility for all Cost Accounting, Product Costing and Analysis, Estimating, Payroll and Credit and Collections.

Good luck in your new assignments, Will and Phil!

**AWARD PRESENTER . . . MIC's** Technical Service Manager **Chuck Slane** recently participated in the Honors Assembly at Plymouth High School. Chuck, chairman of the Voice of Democracy Scholarship given by the Veterans of Foreign Wars, presented its scholarship to Miss Madelyn Glissman.

**FREE ADMISSION AND SKATES** at Tuesday's family skating party sponsored by our Athletic Association. Time: 6 til 8 p.m. Place: USA United Skates of America. See you there!

**DALE ELLIS** has been appointed Controller of our division. Dale has an MBA from Northwestern University, is a CPA and has had experience in both Public Accounting and Industry. Welcome aboard, Dale!

**ENERGY NOTES . . .** Comedy writer Bob Orben says, "If God had really wanted us to have enough oil he never would have given us the Department of Energy."

Trucks and cars in the U.S. consume more than 100 billion gallons of motor fuel a year says Transportation Secretary Brock Adams. He expects this figure to increase despite the fleet average fuel economy standards set for 1985.

**BOX SCORES . . .** Thanks to an overall team effort, Wheelabrator's Softball Team won handily over Friendly Corner last Thursday 13-4. Tuesday's game was won by Michiana Molding 12-2. Chalk up two hits for **John Gottlick**. WFI employee **Ron Betzer** playing for Michiana Molding came in with a home run. (Check the Mishawaka sport section of the Sunday *Tribune* for games played next week.)

In the Memorial Day Tourney at Normain Park **Jerry Johnson** came out of retirement to pitch WFI to a 5-2 victory with relief help from **Pat Woodruff**. (Unfortunately, Saturday's game was Jerry's undoing. We understand that on Sunday he was confined to his bed.) In the balance of the tourney games Goose's Nest and Village Green took WFI 3-0 and 5-4, respectively.

**HITTING THE LINKS . . .** Due to the holiday the Twilight Golf League did not "hit the links." League play resumes next week.

## IT MUST BE SPRING!



When his bicycle is out we know it's spring! Wheelagram's Candid Camera caught Vice President **STEVE McTIGUE** pedaling from the South Office Building to the North Office Building. (On your way to a meeting, Steve?)

Published weekly by and for employees of Materials Cleaning Systems Division.

Wheelabrator-Frye Inc.  
400 South Byrkit Avenue  
Mishawaka, Indiana 46544

Del Tenney, Editor ..... Ext. 397