

the Wheelagram

Materials Cleaning Systems Division
Wheelabrator-Frye Inc.

VOL. IV NO. 8

FEBRUARY 29, 1980

WEIL RECIPIENT OF AUTHOR'S AWARD . . .



GARY WEIL, Industry Manager-Foundry, and Marketing Vice President **JIM COOKE**, admire the WFI Author's Award Jim presented to Gary for his February address — "Cleaning Room Practices" — to the Western New York Chapter of the American Foundrymen's Society. Congratulations, Author!

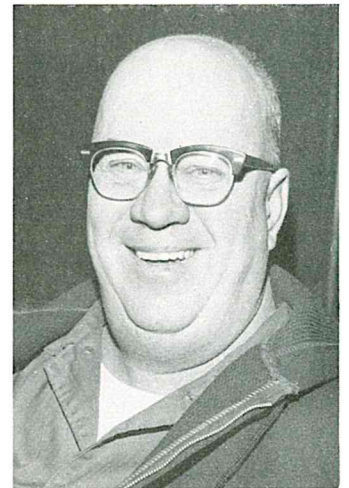
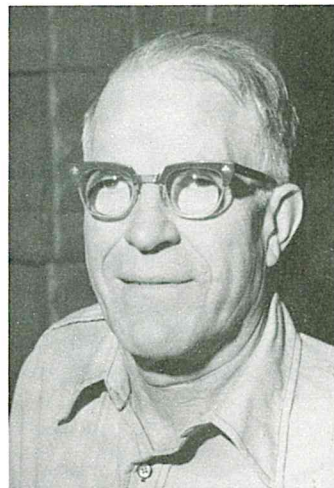
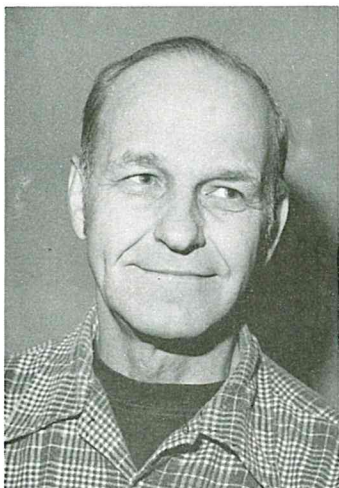
NEW FACES . . . Welcome to: **William P. Cousineau**, Metallurgist-R & D; **Connie R. Hogue**, Billing Clerktypist.

THE BOYS FROM PFP . . .



PFP District Managers were in Mishawaka recently to review sales potential in their respective districts. Expounding at the moment is **ERIC DAUM** (standing), Project Manager, Equipment Design and Manufacturing, obviously holding the attention of (counter clockwise): **ROD JOHNSON**, Manager-Distributor Sales; **JOHN DIVINE**, Central Region; **GEORGE JONES**; **TOM MOTT**, Division Manager; **GREG HIBISKE**, Supply Sales Engineer; **DON PASSEHL**, West Central Region; **JEFF NELSON**, Eastern Region.

SILVER ANNIVERSARIES ABOUND . . .



Congratulations to our five employees who marked 25 years of company service this week (from l to r): **CHARLIE MOON**, Shakeout-Foundry (February 28); **DALE FREEL**, Blade Inspector-Inspection (February 28); **VIRGIL EPPERSON**, Packager-Plant 2 (February 25); **GLENN BRITTON**, Shop Lift Truck-Plant 2 (February 28) and **L. J. DAVENPORT** (not on camera), Inspector-Inspection (February 28).

BALCRANK CONDUCTS SALES SEMINAR . . .



Attending a recently-held Balcrank Industrial Products Sales Seminar here in Mishawaka were Balcrank Sales Reps: **DICK MARGEDANT** (Kansas City, Mo.); **ROGER WARDEN** (St. Louis, Mo.); **MIKE COLLINS** (Northville, Mi.); **MIKE KACZMAREK** (Chicago); and Distributor Salesmen: **DEAN HART** (Detroit); **ED KOLANY** (Chicago); **DENNIS DZIAK** (Chicago); **MIKE LOVE** (Clearfield, Pa.); **DON CARBERRY** (Clearfield); **DAVE SHERBINE** (Altoona, Pa.); **BOB SULLIVAN** (Sciotoville, Oh.); **MIKE NOEL** (Sciotoville). Conducting the seminar were Industrial Products Sales Manager **GUS BROWNE** and **HERK NORRIS**, Northern Region Sales Manager.

WFI'S UNITED WAY COMMITTEE NAMES NEW CO-CHAIRMAN . . . Replacing C. L. Sullivan as Co-chairman of our United Way committee is **Kelly Tucker**. (C. L., who recently resigned from Wheelabrator, is thanked for all his efforts in behalf of our United Way program.) Joining the committee is **Larry Arndt**.

PUZZLE OF THE WEEK . . . Puzzle Editor **Ted Zielinski** submits the following two star (easy) brain teaser:

A camp cook wants to measure four ounces of milk out of a container, but he has only a five ounce and a three ounce measuring cup. How can he end up with four ounces of milk in the five ounce cup?

Solution to last week's puzzle:

Egg production = production rate x time
 $1\frac{1}{2}$ eggs = R x $1\frac{1}{2}$ days (for $1\frac{1}{2}$ chickens)
 R = 1 egg a day (for $1\frac{1}{2}$ chickens)

This means that each chicken lays $\frac{2}{3}$ of an egg in one day (mathematically, if not physiologically correct). Therefore, two chickens lay $1\frac{1}{3}$ eggs in one day. At this rate it would take six days to lay eight eggs.

CORRECTION . . . **John Bergh** is our Chief Engineer-Special Products, not Manager, Product Development-Engineering and he celebrated 15 years of company service on February 22, not 20 years as announced in last week's issue.

THINK SPRING — THINK GOLF!

TOASTMASTERS ELECT OFFICERS — AND CLUB NAME . . .

The following were elected permanent officers of the "WIFFIETALKA" Toastmasters Club at Tuesday evening's meeting:

John Pokorski, President; **Gina Enders**, Administrative Vice President; **Frank Filkins**, Educational Vice President; **Perry Roseman**, Sergeant-at-Arms; **Hazel Jones**, Secretary; **Jim Payne**, Treasurer.

Tentatively, the club Charter is to be presented by Toastmasters International at a special dinner meeting Saturday evening, March 29, at which time the officers will be inducted. Including special guests, members and their spouses (or special friends), an attendance of 75-100 persons is expected.

Future meetings will be held at the L.H.I. each Tuesday evening at 5:15 P.M.



It's never too late to join! New members are welcome to share the fun and educational experience.

WFI'S CHIEF WELDING & METALLURGICAL ENGINEER **John Vasein** has been reappointed as a member of the "Welding Advisory Committee" of the Elkhart Area Career Center.

Advisory Committee activities are directed toward a closer cooperation between business and education in providing vocational training and placement for young people in our community.

MANAGEMENT CLUB MEMBERS — PLEASE NOTE CHANGE . . . The Social Hour will begin at **6:30 P.M.**, not 6:00 P.M., as previously announced for the **March 8** meeting to be held at the **Holiday Inn, Roseland**. Dinner will be served at 7:00 P.M. Corporate Group Vice President **Tom Begel** will be the guest speaker.

SPRING DINNER DANCE TICKETS ARE STILL AVAILABLE . . . See your area AA rep for your ticket to the annual Spring Dinner Dance, Saturday, March 8 at the BK Club, Mishawaka. Dinner — 7 o'clock. Dancing — 9 o'clock. Dining and dancing for only \$15 per couple (dinner tickets sold in advance only).

**OPERATION
 NAVY 
 2-48 D **

Published weekly by and for employees of Materials Cleaning Systems Division.

Wheelabrator-Frye Inc.
 400 South Byrkit Avenue
 Mishawaka, Indiana 46544

Del Tenney, Editor Ext. 397