

# the Wheelagram



Materials Cleaning Systems Division  
**Wheelabrator-Frye Inc.**

VOL. IV NO. 39  
OCTOBER 24, 1980

**AN INVESTMENT FOR THE FUTURE . . .** One way profit is returned to us is by the purchase of modern, efficient equipment, such as the new mini-computer system recently installed in the Manufacturing Engineering Department.

This system is primarily used to develop numerical control programs for the eight N/C machines located in our shop. Prior to this acquisition, we purchased computer time from an outside source. Because of the continually rising cost of outside computer time, this new system will pay for itself in just three years.

The system is composed of three terminals — two hard copy and one CRT, a high-speed printer and a plotter. A modular system, it can be expanded as our needs grow.

To accentuate the N/C programming, two additional languages, Fortran and Basic, have been installed on the system. These languages will allow the added benefit of performing highly complex design analyses, development of cost models, and improve process planning techniques.

The purchase of this equipment allows us to react more quickly to our customers' needs by increasing our productivity — another move to keep WFI ahead in a highly competitive marketplace.



Coordinator and Senior N/C Programmer **Mike Stout (l)**, N/C Programmers **Lee Beatty** and **Don Duerksen** and our new mini-computer system.

## NEW FACES . . .

**Phillip R. Evans, Sr.**  
Lab Technician-Process &  
Product Development

Not on camera is **Carl E. Sjoquist**, Blastrac Field Technician-Houston.

Welcome to Wheelabrator,  
Phil and Carl!



**PHILLIP R. EVANS, SR.**



**FRANK WALKER**

## PROMOTIONS . . .

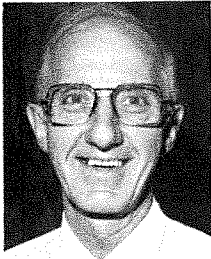
Congratulations to **Frank Walker** promoted from Project Engineer to Senior Project Engineer, Export-Marketing.



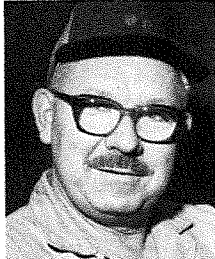
**OUTSTANDING PERFORMANCE . . .** Recently our Purchasing Department recognized **Don Mennucci** of Dodge Manufacturing with an "Outstanding Salesman" award for his consistently good service, on-time delivery, and competitive pricing over a goodly number of years as a Wheelabrator vendor. Presenting the award to Don (center) was Purchasing Manager **Jud McKinley (l)** while Senior Buyer **Frank Williams (r)** smiles approvingly.

**DON'T FORGET TO APPLY . . .** Any employee or child of an employee who will be eligible to enroll in college in the Fall of next year has the opportunity to apply for the Verne E. Minich "Founder" Scholarship (at Purdue University) or the Otto A. Pfaff Scholarship (at the University of Notre Dame). Application must be made before JANUARY 1. Check with our Personnel Office. Field personnel may write for further information. Scholarship winners receive \$1500 per year toward their school expenses.

## SERVICE ANNIVERSARIES . . .



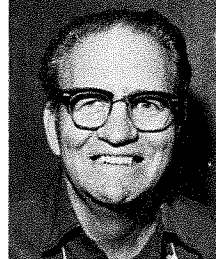
**Gene Dickerson**  
Senior Parts Sales  
Correspondent-  
Parts Sales  
40 Years (Oct. 21)



**Alfred "Butch"  
Verbeke**  
Shop Lift Truck-  
Plant 2  
30 Years (Oct. 23)



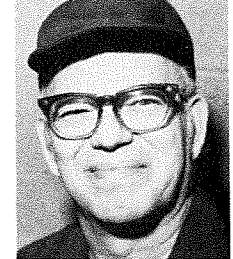
**Tom Crider**  
Group Leader-  
Compound Mixing  
25 Years (Oct. 5)



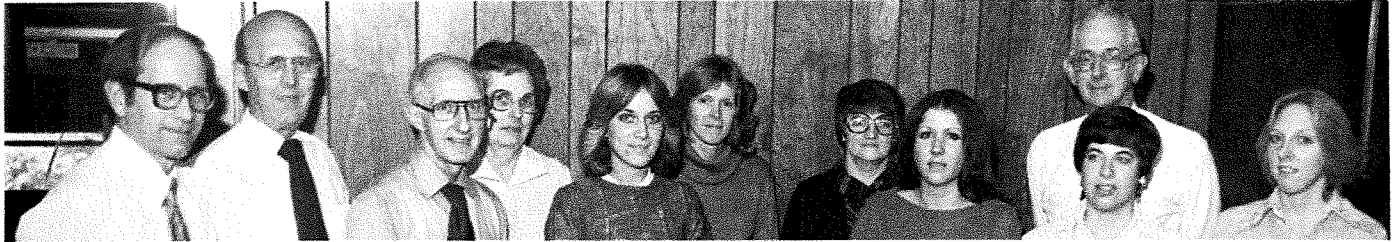
**Herschell Beegle**  
Carpenter-  
South Shipping  
25 Years (Oct. 18)



**Richard "Mac"  
McConahay**  
Foreman-  
Plant 2  
25 Years (Oct. 19)



**Paul Hillebrand**  
Lab Technician-  
Process & Product  
Development  
25 Years (Oct. 21)



Helping **Gene Dickerson** and **Paul Hillebrand** celebrate their respective service anniversaries were co-workers from Parts Sales (top photo) and Engineering's Process & Product Development crew.

**MARKING 15 YEARS OF COMPANY SERVICE** this month are: **Betty Honold**, Secretary-Engineering (October 18); **John Phillips**, "Assembler A"-Assembly (October 18); **Leroy Bowers**, Skill A Layout-Steel Fabrication (October 25); **Billy Barsoda**, "Assembler AA"-Assembly (October 25); **Jerry Burks**, Shop Lift Truck-Plant 2 (October 25); **Modest Wendowski**, Shop Lift Truck-Plant 2 (October 25); **Lynn Kaser**, Maintenance Electrician (October 28); **Ronald Esarey**, General Order Filler-Stores & Receiving (October 28); **William Rutkowski**, General Order Filler-Stores & Receiving (October 28); **Dale Hartz**, Inspector-Inspection (October 28).



**WFI BOWLING LEAGUE . . .** October 14 results: First place leader with 17 wins and 7 losses, North Shipping (**L. Young**, **R. Cukrowicz**, **O. Boembeke**, **B. Fore**, **C. VanBellegham**). Team High Three Games (2908) North Shipping; Team High Game (1027) Rolling "5" (**F. Britton**, **E. Buss**, **D. Susan**, **G. Weston**, **J. Mumby**); Individual High Single Game (237) **H. VanWaeyenberghe**; Individual High Three Games (625) **D. Schaut**. Rolling 200 or better were: **M. Rutkowski** (206, 201), **L. Cookie** (217), **H. VanWaeyenberghe** (237), **G. McNeile** (224), **W. Young** (223), **R. Banacka** (221), **J. Rigdon** (211).

**WFI TRAP LEAGUE RESULTS (10/19/80):** With a total of 10 points each, "Maintenance Handicappers" and "Office Shooters" are tied for first place. High guns to: **Jim Haines** (46), **Chuck Johnson** (44), **Lynn Kaser** (44), **Dick Slocum** (43) — Dick and Lynn shooting 25 straight — **Mike Stout** (41), **T. C. Williams** (41), **Dean Bayman** (40).

### PUZZLE CORNER . . .

#### Solution to last week's puzzle:

Only a fruit picked from the "Apples and Oranges" box guarantees a correct answer. If you choose an apple you know it must be only apples. Therefore, the box marked "Apples" must be oranges and the box marked "Oranges" must be apples and oranges. Likewise, an orange picked from the "Apples and Oranges" box is conclusive.