

the Wheelagram



Materials Cleaning Systems Division
Wheelabrator-Frye Inc.

VOL. IV NO. 42

NOVEMBER 14, 1980



Ted Zielinski



Bob Neidigh



Don Schinbeckler



Phil Evans, Sr.

PRODUCT & PROCESS DEVELOPMENT PERSONNEL ATTEND MAINTENANCE TRAINING . . .

In order to maintain a high quality of knowledge in relationship to their work, a Maintenance Training School is being conducted for our Product and Process Development personnel.

WFI Schoolmaster **Gene Tarabek** and his faculty — **Bruce Berger, Art Joye, and Maurie McCally** — are covering a range of topics from “Fundamentals of Blast Cleaning” to “Abrasive and Its Uses,” at the weekly-held seminars.

Chief Engineer-Product and Process Development **John Bergh** commented that he thinks of this as “training/refreshment — an opportunity to learn new things about our product line, as well as to refresh our memories.”

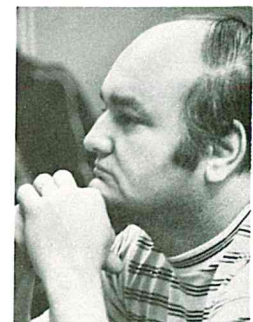
▼ The Schoolmaster and seminar participants.



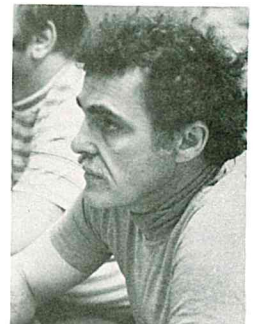
Muncy Harris



Harvey Van Fossen



Larry Arndt



Ray Gervais



John Bergh

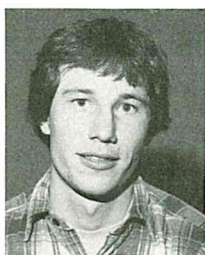


Paul Hillebrand

NEW FACES . . . (Not on camera, but a “new face” in our Southern Region is Secretary **Sandra McLevige**.)



Claire Cain
 Parts Sales
 Specialist



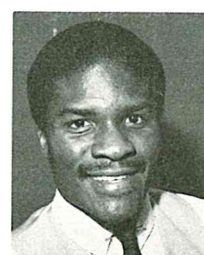
Dee J. Fishbaugh
 Technician-Product
 & Process
 Development



Stephanie Gibbs
 File Clerk-
 Engineering



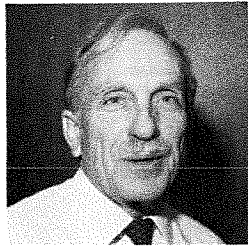
Glen Greta
 Product Manager-
 Sand Reclamation,
 Marketing



Stanley Harris
 Draftsman-
 Engineering



Robin Horvath
 File Clerk-
 Engineering



SERVICE ANNIVERSARIES

Robert Wyckoff

Assistant Credit Manager-
Credit Department

25 Years (November 1)

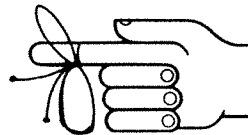
Not on camera is **Bill Ciesielski**, Carpenter-Balcrank Shipping, who marked 25 years of service November 9.

Fifteen years of service for: **Ernest Grzesiak**, Painter Helper-Sheet Metal & Plating; **William Morrison**, Designer-Engineering; **Kenneth Henry**, Assembler A-Assembly; **James Daugherty**, Flame Cutter-Steel Fabrication; **Louis Ganus**, Grinder-Foundry; **Lawrence Gurthet**, Finish Bench Grinder-Assembly — November 1. **Donald Stephens**, Shop Lift Truck-Materials Handling; **Wendaline Switalski**, Assembler AA-Assembly; **Dennis Carter**, Core Maker-Foundry; **Edward Dobrzykowski**, General Order Filler & Checker-Balcrank Stores; **William Van Antwerp**, Cincinnati Brake Operator-Steel Fabrication; **David Finch**, Machine Repair-Maintenance — November 8. **Francis Farrell**, Inspector-Inspection — November 9. **Donald Bare**, Assembler A-Assembly; **David Stafford, Sr.**, Carpenter-South Shipping — November 11. **Daniel Cholasinski**, Materials Handler-Steel Fabrication; **John Mourning**, Crane Operator-Assembly — November 12. **Archie Davis, Jr.**, Foreman-Steel Fabrication; **Charles Reihl, Jr.**, Machine Repair-Maintenance; **Jack Gemmer**, General Order Filler & Checker-Stores; **Remo Artusi**, Tester-Balcrank Products; **Octave DeLaurelle**, General Order Filler & Checker-Stockroom.

REMINDERS . . .

Employees Only Stag . . .

Saturday night, BK Club, 7:00 p.m.-1:00 A.M. Lots of fun, food, and refreshments! Donation: one dollar.



WFI Scholarship Applications Available . . . Any employee or child of an employee who will be eligible to enroll in college in the Fall of next year has the opportunity to apply for the Verne E. Minich "Founder" Scholarship (at Purdue University) or the Otto A. Pfaff Scholarship (at the University of Notre Dame). Application must be made before JANUARY 1. Check with our Personnel Office. Field personnel may write for further information. Scholarship winners receive \$1500 per year toward their school expenses.

Blue Cross-Blue Shield . . . Overage dependents must be enrolled (or re-enrolled) on a special enrollment application **prior to December 1.**

Medicare . . . If you or your spouse will become 65 during the remainder of this year or during the next year, be sure to enroll with your local Social Security office for *both* Parts A and B of Medicare **approximately three months before your 65th birthday.** Failure to enroll may deny you important health benefits.

If the employee will not be 65 during the remainder of this year or during the next year, but has a spouse who will become 65 during that time, the employee should report to the Personnel Office for further details.

REMINDERS, Continued

FLASH . . . Starting Monday, November 17, Plitt Theatre discount tickets will sell for \$2.25 each — an increase of 25¢.

Effective immediately, USA Roller Rink half-price admission to WFI personnel and families is no longer available.

WHEELABRATOR PRECISION FINISHING HOLDS

SEMINAR . . . Salesmen from nine distributor organizations from throughout the country were in Mishawaka recently to attend a two-day training seminar on our Precision Finishing product line. Instructors included: General Manager **Tom Mott**; **Don Bunnell**, West Central District Manager; **Don Chlebek**, Demonstration Manager; **John Divine**, Product Manager-Vibratory Supplies; **Greg Hibiske**, Central District Manager; **Jeff Nelson**, Eastern District Manager.



Distributors listen intently while John Divine describes the various types of equipment available.



WFI BOWLING LEAGUE...

November 4 results: The top three teams include: North Shipping (**L. Young, R. Cukrowicz, O. Boembeke, B. Fore, C. VanBellegham**) with 25 wins, 11 losses; Stockroom (**B. Trytko, J. Medich, A. Kristowski, D. Austin, G. Scott**) with 23 wins, 13 losses; Prefabs (**R. Barton, D. Vandebore, W. Standridge, E. Tesmer, B. Barsoda**) with 21 wins, 15 losses. Team High Three Games (2908) North Shipping; Team High Game (1027) Rolling "5" (**F. Britton, E. Buss, D. Susan, G. Weston, J. Mumby**); Individual High Single Game (237) **H. Van Waeyenberghe**; Individual High Three Games (625) **D. Schaut.**

Rolling 200 or better scores were: **L. Cookie** (202, 224), **Sherry Barrett** (214), **R. Holbert** (210), **L. Young** (206), **W. Young** (204), **M. Rutkowski** (202), **G. Weston** (201).

PUZZLE CORNER . . .



In the 100 yard dash Tom has to give Dick a 20 yard head start, and then they finish in a dead heat.

Strangely, exactly the same result is achieved when Harry gives Tom a 25 yard head start.

Dick challenges Harry to a race and, naturally, feels that he deserves a head start.

For there to be another dead heat, how much head start should Harry give Dick?

Solution to last week's puzzle: Betty is 27½ years old (Camille is then 16½).