

the Wheelagram



Materials Cleaning Systems Division
Wheelabrator-Frye Inc.

VOL. IV NO. 46

DECEMBER 12, 1980

RICE NAMED PLANT MANAGER-BEDFORD . . .



Welcome to **David Rice** who has been appointed Plant Manager-Bedford.

Dave joins Wheelabrator from the Anderson Company, a subsidiary of Square D in the Birmingham, Alabama area. He has a degree in Metallurgy from the University of Alabama, and has numerous years of experience as a Plant Manager, Plant Metallurgist, and Manager of Manufacturing Services.

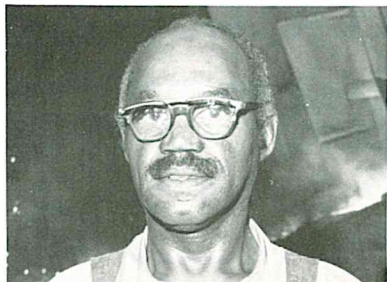
CAPARELL PROMOTED TO FOUNDRY SUPERVISOR . . .



Congratulations to **Don Caparell** who has been promoted to Foundry Supervisor, effective December 1.

Don has over 11 years of company service, during which time he has repeatedly demonstrated his leadership abilities; most recently as Union Committeeman for UAW Local 995.

Good luck in your new assignment, Don!



NOVEMBER'S MELTER OF THE MONTH — Bretho Danzy — achieved top quality performance for the second time this year. Bretho, also named Melter of the Month for February, is a second shift Melter with 21 years of company service.

TOMORROW IS THE DAY . . .

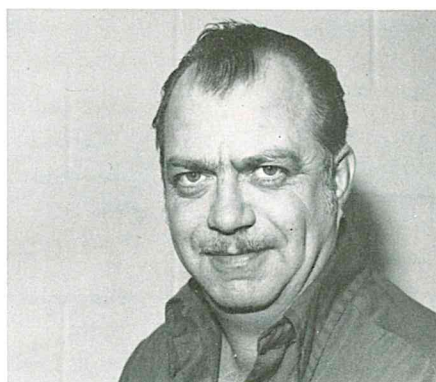


Good times are in store for Wheelabrator kiddies tomorrow when they attend the annual Christmas parties sponsored by our Athletic Association. For the young set, a theatre party at Town & Country, 10:00 a.m.-Noon; for the teens, a roller skating party at Rainbow Roller Rink, 9:00 a.m.-Noon.

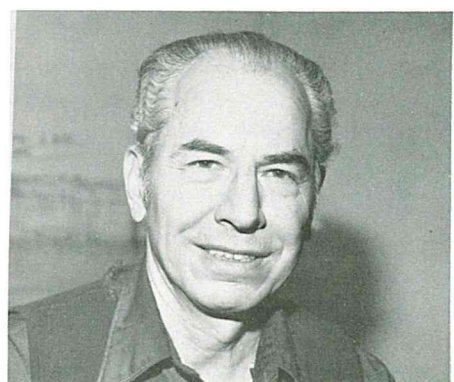
SERVICE ANNIVERSARIES . . .



Edward Conner
Carpenter-South Shipping
30 Years (November 25)



Roy Ward
Foreman-Machine Shop
25 Years (November 21)



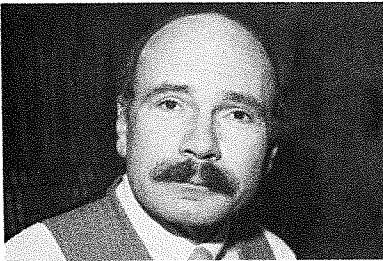
Eugene Sanders
Sheet Metal A-Steel Fabrication
25 Years (November 28)

Not on camera are **Firman Adams**, General Order Filler & Checker, and **Roy Chevrie, Jr.**, Process Control Helper-Plant

WELCOME . . . AND WELCOME BACK . . .



Welcome to **Larry Gunter**, our "new face" in the Purchasing Department, who has been appointed to the position of Senior Buyer.



And welcome back to **Jim Harriman** who has rejoined our division to manage the newly created Used Blast Equipment Division. Jim will be responsible for the purchase and resale of used blast machines and will be closely coordinating his activities with the sale of new equipment.

SERVICE IS OUR MIDDLE NAME . . .



Service Supervisors were in Mishawaka recently for the bi-monthly field installations review meeting. Also participating were Engineering and Marketing personnel.

PUZZLE CORNER . . .

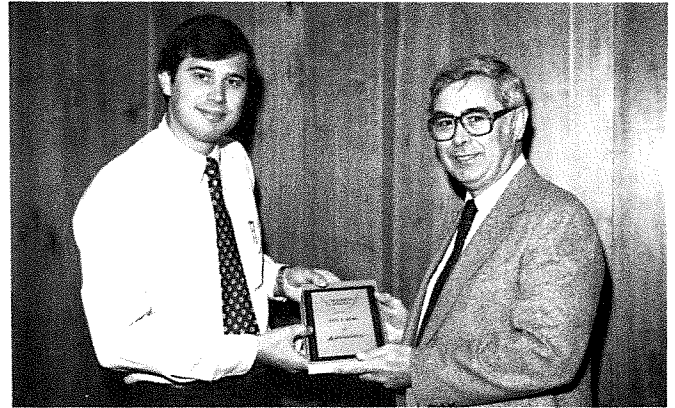
Two boys, one pony . . . and the farm was exactly one mile away. "Tell you what," said Bill. "I'll ride part of the way, then leave the horse for you and start walking."

The problem was that his friend Ken could walk at 4 m.p.h., whereas Bill himself could manage only 3 m.p.h. The pony, however, could keep up a steady 12 m.p.h. with someone on its back.

Now, assuming that Ken started walking at the same moment that Bill rode away, how far along the road must the pony be left for both boys to arrive at the farm together?

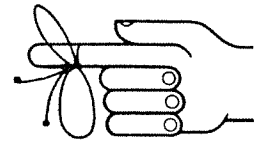
Solution to last week's puzzle: Three brown cows.

DIVINE RECIPIENT OF AUTHOR'S AWARD . . .



Precision Finishing's **John Divine** (l) receives the handsome Author's Award plaque and congratulations from General Manager **Tom Mott** (r). John received recognition for his presentation — "Vibratory Finishing" — to the Society of Manufacturing Engineers, San Fernando Valley, California chapter, early in November.

REMINDERS . . .



December 16 — Turkey & Ham Distribution. Don't forget your identifying IBM card when you pick up your Christmas goodies on Tuesday. Pick up hours are between 6:30 a.m. and Midnight at the following locations: From a trailer parked on the North Drive adjacent to the North Gate (6:30 a.m. til Midnight); inside the South Shipping Building from a trailer parked at Dock No. 9 (from 6:30 a.m. til 4:00 p.m.).

December 18 — Julianna Club Christmas Party. Be on hand to join the fun at Knollwood Country Club. Social Hour 6:00-7:00 p.m., dinner 7:00 p.m.

December 12 thru December 23 — Chocolate Charlie Time. Support the Julianna Club's Scholarship Fund and buy your Chocolate Charlie now. 12 oz. Chocolate Charlie — \$3.25; 1½ lb. Chocolate Charlie — \$6.50.



WFI BOWLING LEAGUE . . . December 2 results: With 38 wins and 14 losses, Stockroom (**B. Trytko, J. Medich, A. Kristowski, D. Austin, G. Scott**) is the first place leader. Team High Three Games (2908) North Shipping (**L. Young, R. Cukrowicz, O. Boembeke, B. Fore, C. VanBellegham**); Team High Game (1027) Rolling "5" (**F. Britton, E. Buss, D. Susan, G. Weston, J. Mumby**); Individual High Single Game (259) **W. Young**; Individual High Three Games (649) **B. Trytko**.

Rolling 200 or better: **G. Scott** (212), **A. Kristowski** (214), **D. Ansbaugh** (200), **R. Banacka** (201), **R. Celie, Jr.**, (257), **J. Williams** (225), **JoJo Cukrowicz** (201).