

the Wheelagram



VOL. IV NO. 22

JUNE 13, 1980

WFI SCHOLARSHIP WINNERS ANNOUNCED . . . Congratulations to **Cindy L. Marchant** and **Renee A. Mast** who have been named the 1980 recipients of the two university scholarships annually awarded by our division.



(l to r) Scholarship Committee members **Bob Schalliol** and **Ed Sullivan** congratulate Cindy and Renee on their respective awards.

A 1980 graduate of Jimtown High School, Elkhart County, Renee is the recipient of the Verne E. Minich "Founders Scholarship" — named after Wheelabrator's founder and first president — and plans to pursue the Mechanical Engineering curriculum at Purdue Uni-

versity. She is the daughter of Mr. & Mrs. Floran L. Mast of Elkhart.

Cindy will continue working toward a degree in Accounting at the University of Notre Dame as the recipient of the Otto A. Pfaff Scholarship, named after the company's second president. A 1978 graduate of Mishawaka High School, Cindy is an employee in our Accounting Department and had previously worked in our Engineering Department. She attended I.U.S.B. and then entered Notre Dame's School of Business Administration where she has completed her sophomore year of academic work.

Renee, a member of the National Honor Society, is a part-time employee in our Engineering Department as a Draftsperson. Active in the Vocational Industrial Clubs of America at the Elkhart Career Center, she recently took first place in their regional drafting competition and is entered in the national competition.

Cindy, the daughter of Mr. & Mrs. Steve J. Osza, and wife of Greg Marchant, a teacher at Jimtown High School, is a member of the National Honor Society. While at Mishawaka High School, she was a Pom Pom Girl and active in the Drama Club.

The grants have a potential value of \$6,000. Selection of the winners rests solely in the hands of the respective universities and the awards are based on the student's ability to meet college requirements, scholastic record, financial need, citizenship and moral character.

WORKING "SAFE" IS COMMON SENSE . . . If you don't believe us, just ask Foundryman **Frank Zappia!** While performing a routine job assignment, breaking alloy scrap with his sledge hammer, a small piece of metal flew off striking Frank's safety glasses, shattering the lens but not injuring his eye.



Safety glasses are a must wherever industrial work is being done. The fact that Frank practiced good safety habits meant the difference between replacing a pair of shattered safety glasses and possible blindness.



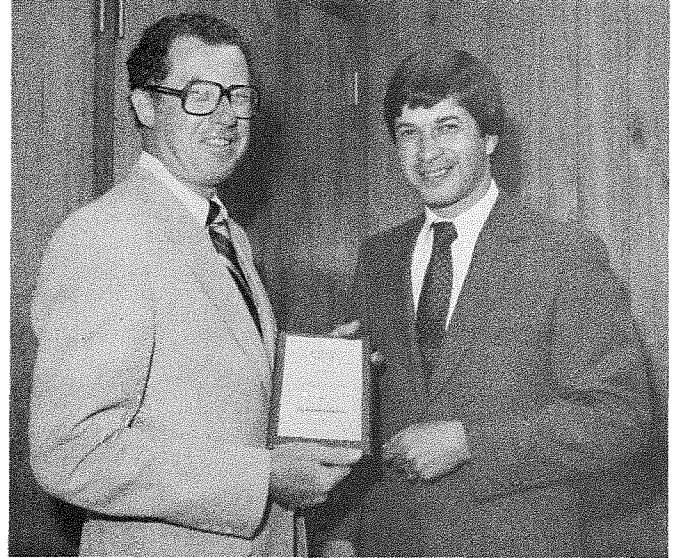
(l to r) Industrial Relations' **Glenn Fulmer** presents Frank with the National Society to Prevent Blindness "Wise Owl Club" membership. Proud of Frank's good safety habits, Assistant Foundry Superintendent **Dick Zelman** smiles approvingly.

WFI RECOGNIZES OWN . . .

Throughout the country, our personnel step to the podium to tell the Wheelabrator story. We offer congratulations to the following "words men" who are recent recipients of our Author's Award:



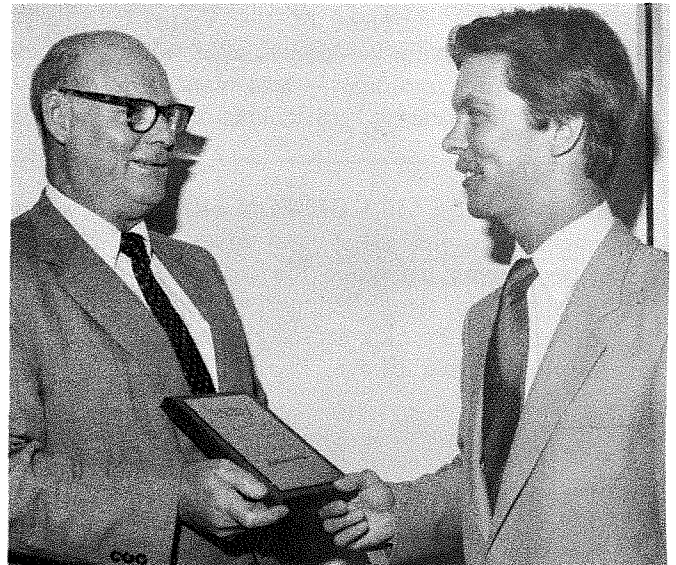
CARL CRIST . . . For presentations to the Society of Manufacturing Engineers in Houston, Texas, and Bethlehem, Pennsylvania, Carl (r) receives the handsome Author's Award plaque and congratulations from Balcrank's Jet Pulser Manager **Ray Donovan** (l).



DEL EVANS . . . A familiar figure on the speaker's circuit is Southern Regional Manager **Del Evans** (l). Here, Del shows us the plaque just presented to him by **Joe Ponteri** (r), Vice President, Sales and Marketing. (One of Delbert's favorite topics is "How Clean Is Clean?")



FRANK FILKINS . . . "A Systems Approach to Steel Surface Preparation" is a subject close to Frank's (l) heart. (Frank serves as Industry Manager-Steel.) **Brown Sanders** (r), Manager-Equipment Products, and one of our first recipients of the Author's Award, offers congratulations.



BILL NIEDBALSKI . . . Bill (r), who assists **Rod Johnson** (l), Manager-Distributor Sales, with our Delta Product Line, wins approval and congratulations from Rod with his presentations on "Delta, Child of the 80's."

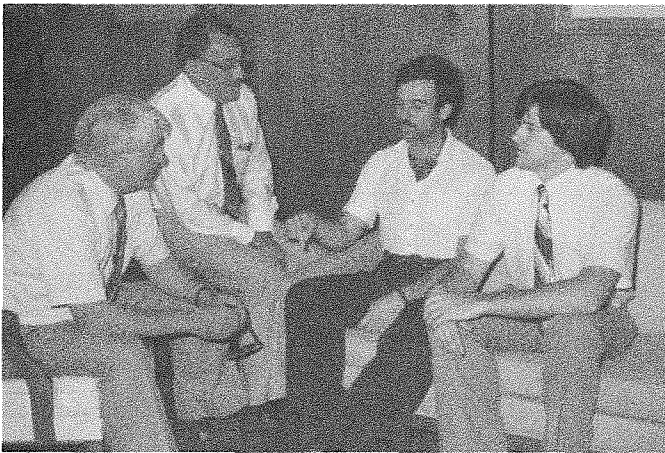
WFI SCHOLARSHIP HOLDERS GRADUATE . . .

Our congratulations and good wishes for continued success to the following three WFI Scholarship recipients who graduated this Spring:



Debbie Tarabek Meyer

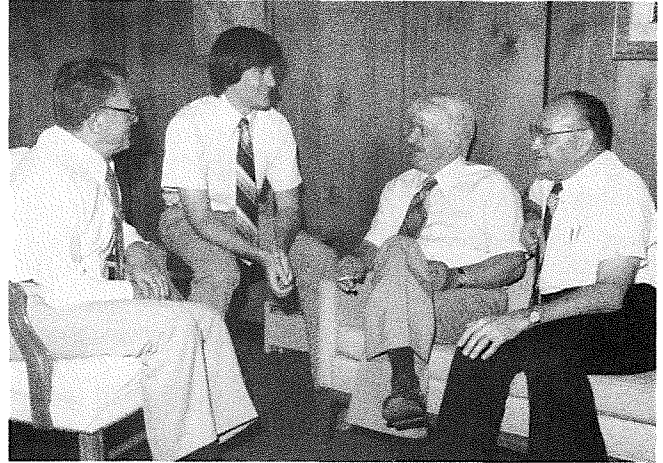
DEBBIE TARABEK MEYER — Recipient of the 1975 Verne E. Minich Purdue Scholarship awarded the Bachelor of Science Degree in Pharmacy. While at Purdue, Debbie distinguished herself during her senior year with a 6.0 average and was named to the Dean's List. A member of Kappa Epsilon Social Sorority, she was a Clinical Pharmacy Teaching Assistant for three years and a member of Alpha Lambda Delta, Freshman Honorary Society for Scholastic Achievement. Debbie is the daughter of Customer Service's **Gene Tarabek**.



Relaying his future plans to **Ralph Sanford, Harold Schulte** and **Jim Parks** is graduate **Steve Grise**.

STEVEN L. GRISE, son of Inspection's **Kenny Grise**, received a Bachelor of Science degree in Chemical Engineering from the University of Notre Dame. Steve was the recipient of the 1976 Otto A. Pfaff Scholarship. This summer, Steve will work at Amoco Research Center in Naperville, Illinois and will enter Lehigh University in the Fall to pursue graduate studies. While at Notre Dame, Steve was a member of the marching and concert bands, the liturgical brass choir, and the jazz band.

JAMES PARKS — Recipient of the 1976 Verne E. Minich Purdue Scholarship received the Bachelor of Science Degree in Environmental Engineering. Jim's main field of interest is water quality and he will travel to Honduras as a member of the Peace Corps with the assignment to help develop that country's water supplies. Jim is the stepson of **Walt Wolf**, Production Control.



Scholarship Committee members **Harold Schulte, Ralph Sanford**, and **Bob Schalliol** had an opportunity to learn of **Jim Parks** plans firsthand during Jim's recent visit to the plant.

CREDIT UNION FLASH . . .

Effective immediately, the annual dividend rate for the Credit Union's one year share certificate program is now 9.50 per cent.

NEW FACES . . . Welcome to: **Richard M. Press**, Blastrac Field Technician-Western District; **Camille J. Haines**, Blastrac Clerical Specialist; **Alfred "Al" DeLitzia**, Industry Manager-Transportation, Marketing.

SERVICE ANNIVERSARIES . . . Celebrating 15 years of company service June 14, is **Virgil Jodway**, Blade Inspector-Inspection.

SAFETY FIRST . . . Congratulations to the following plant teams employing good safety habits the past four months and taking top honors in our monthly "Safety First" contest: February: Team 5 — Machine Shop and Turret Lathes; March: Team 1 — Material Handling, North Shipping, Balcrank Stores, and Balcrank Shipping; April: Team 10 — Plant 2, Third Shift; May: Team 14 — Steel Shop, Structural Cutting, and Sheet Metal Fabrication.

PUZZLE CORNER . . .

Industrial Engineering's **Mike Stout** submits the following problem in the science of deductive thinking.

This test of mental alertness was administered to a group of hopeful applicants for an important position with a large engineering concern. Each man was allotted a two hour maximum to complete his work on this problem. One applicant finished his deduction in twenty-three minutes with a perfect score. See how long it takes you to solve this problem concerning this fictional baseball team. Name the men.

- A. Andy disliked the catcher.
- B. Ed's sister was engaged to the second baseman.
- C. The center fielder was taller than the right fielder.
- D. Harry and the third baseman lived in the same building.
- E. Paul and Allen each won \$20.00 from the pitcher at pinochle.
- F. Ed and the outfielders played poker during their free time.
- G. The pitcher's wife was the third baseman's sister.
- H. All the battery and infield, except Allen, Harry and Andy are shorter than Sam.
- I. Paul, Andy and the shortstop lost \$150.00 apiece at the race track.
- J. Paul, Harry, Bill and the catcher took a trouncing from the second baseman at pool.
- K. Sam was undergoing a divorce suit.
- L. The catcher and the third baseman each had two children.

- M. Ed, Paul, Jerry, the right fielder and the center fielder were bachelors; the others were married.
- N. The shortstop, the third baseman and Bill each had cleaned up \$100.00 betting on the fight.
- O. One of the outfielders was either Mike or Andy.
- P. Jerry was taller than Bill. Mike was shorter than Bill. Each of them was heavier than the third baseman.

Pitcher _____
Catcher _____
First Base _____
Right Field _____
Second Base _____
Third Base _____
Shortstop _____
Center Field _____
Left Field _____

Solution to last week's puzzle:

Start both hourglasses simultaneously.

When the four minute glass runs out, turn it over (four minutes elapsed).

When the seven minute hourglass runs out, turn it over (seven minutes elapsed).

When the four minute glass runs out for the second time (eight minutes), turn over the seven minute glass that has been running for one minute.

When the seven minute hourglass runs out, nine minutes have elapsed!

On The SPORT SCENE...

HITTING THE LINKS . . .

Dawn Golf League Results: Round 5 — Team 3 (**R. Hensel, S. Calmus**) and Team 11 (**M. Bonnie, B. Gasko**) are tied for first place. Individual Low Scratch (41) **C. Barnes**; Individual Low Net (34) **S. Calmus**; Team Low Scratch (85) Team 9 (**C. Barnes, J. Christy**); Team Low Net (73) Team 5 (**L. LeMaire, R. Celie**).

Twilight Golf League Results: No play due to rain.

RUN . . . RUN . . . RUN . . . Participating in the 10,000 meter Michiana Blood Donor Run, May 24, at Leeper Park were: Parts Department's **Gina Enders** and **Paul Meyers** and Accounting's **Jim Robbins**.



"Gina's a champ!" according to fellow runners Jim and Paul. They felt it was especially noteworthy that Gina finished the race in about 58 minutes and had only trained for this distance for a couple of weeks.