

# the Wheelagram



Materials Cleaning Systems Division  
**Wheelabrator-Frye Inc.**

VOL. IV NO. 13

APRIL 3, 1980

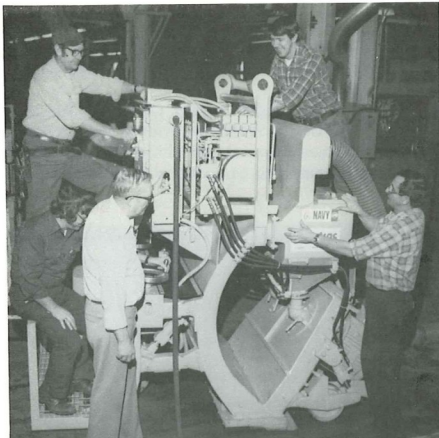
**ANOTHER SUCCESS STORY — THANKS TO TEAMWORK! . . .** It was no April Fool's joke. On Tuesday, April 1, the U.S. Navy did in fact unload their brand new 2-48 D Blastrac from a WFI truck at the Norfolk Naval Shipyard.

If you recall, early in January the Navy had contracted with Wheelabrator to have a 2-48 D Blastrac built and debugged, ready for shipment by April 1.

The Company, with assurance from the Union Committee, bet on its team to build in-house and ship a quality product by the deadline — a tough assignment.

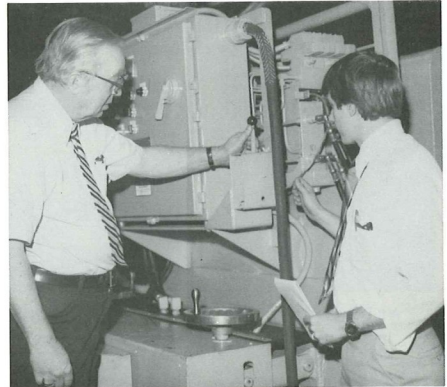
With total effort and dedication a tough assignment was completed — teamwork got the job done again!

**ON CAMERA — SOME OF THE TEAM MEMBERS WHO HELPED TO COMPLETE THE JOB . . .**

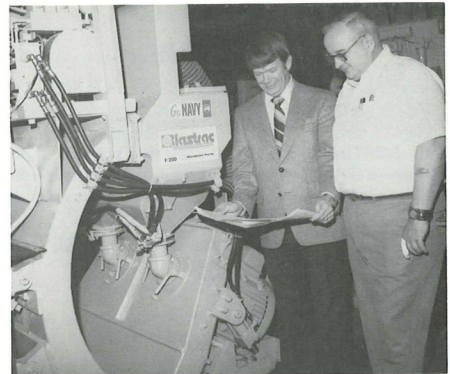


Assembly Foreman **Gene Rumpfelt** and some of his crew: **Loson Young**, Electrician; **Fred Britton**, Electrician; **Chuck Wagner**, Assembler; **Gene Weston**, Assembler.

**HAPPY EASTER HOLIDAY! . . .** In observance of the Easter Season, all departments will be closed tomorrow through Monday, April 7.



Engineers **Harvey Van Fossen** and **John Gottlieb**.



"Looking good!" comments Blastrac Division Manager **Bill Butler** to **Dick Bidlack**, Production Control Specialist.

**NEW FACES . . .** Welcome to **Robert Schmok**, Blastrac Field Technician.

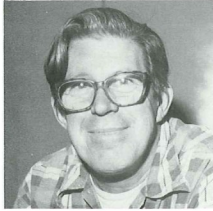
**CONGRATULATIONS** to **Duane Drake**, Assembler AA-Assembly, who chalked up 20 years of company service March 31.

# Service Anniversaries...

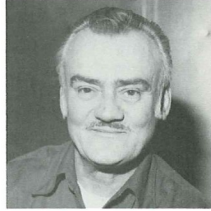
Congratulations to the following employees who have attained 25 years of company service. (Not on camera, but a 25-year man is **Ray Fuller**, Plant 2 General Foreman.)



**FRANK TURZA**  
Tool Crib Attendant  
(March 24)



**RALPH DIETRICH**  
Assembler AA  
(March 28)



**JOSEPH REXSON**  
Core Maker-Foundry  
(March 28)



**JAMES BRADY, JR.**  
Packager-Plant 2  
(March 29)



**JOSEPH LEYES**  
Assembler AA  
(March 29)

## On The SPORT SCENE...

### WFI SOFTBALL TEAM EXTENDS THANKS . . .

Thanks to all the good WFI folk who supported our softball team's "Mr. & Mrs. Smoker," either by attending or working the event to make it a success.

Lucky prize winners were: **Henry Fletcher**, \$150; **Paul Wilikens**, \$100; **Jerry Weston**, \$50.

**FLASH.** . . Anyone interested in participating in the **Spring Racquetball Tournament**, April 15, should contact **Bruce Taylor** on ext. 393.

### PUZZLE CORNER . . .

Answer to last week's teaser:

Daniel Eaton, Maine, Jam, Salmon.  
Carmella Grey, Nebraska, Idaho potatoes,  
tan.  
Brian Farmer, Oregon, lemon pie, red.  
Ada Hill, Pennsylvania, kidney beans, umber.

**CREDIT UNION DIVIDEND ANNOUNCED . . .** The Board of Directors of the WFI Employees Federal Credit Union has announced a 7 per cent dividend for the first quarter of 1980 on all eligible regular, Christmas Club, and Vacation Club share accounts. The dividend will be paid by a credit to all share accounts and will be reflected on the first quarter statement to be mailed to all shareholders in April.



**"OF COURSE, WE'RE DOING IT THE WHEELABRATOR WAY, ARDEE!"** . . . So it seems Chief Engineer **Curt West** is telling **Ardee Freeman** — otherwise known as "Mr. Wheelabrator" — on his return visit to the plant last week. Engineer **Ed Power**, we're sure, commented on the spiffy Hawaiian tan Ardee was sporting. We know we did!