

the Wheelagram



Materials Cleaning Systems Division
Wheelabrator-Frye Inc.

VOL. IV NO. 41
NOVEMBER 7, 1980

THE CAMPAIGN TRAIL . . . Major political candidates toured our facility prior to Tuesday's election.



Before taking plant tours conducted by **Ralph Sanford** and **Karl Zimmer**, the candidates and their aides met with President **Joe O'Callaghan** and **Jack Trant**, Vice President-Administration. (left) Congressman **John Brademas** who sought reelection in the Third District; (middle) **Lt. Governor Orr** who campaigned for and won the Governorship; (right) **John Hiler**, Republican nominee and successful candidate for House of Representatives, Third District.



OVER THE TOP . . .

In spite of current economic conditions, employees responded to this year's United Way Drive by topping our goal of \$59,313 by an excess of over \$1000. The WFI amount announced at the report meeting Monday evening was \$60,667.12!

Thanks to our caring, the United Way can continue to serve others not as fortunate as we.

REMINDER FROM PERSONNEL BLUE CROSS- BLUE SHIELD . . .



Employees who have dependent, unmarried children, age 19 to 25, may cover them under Blue Cross-Blue Shield as overage dependents. To be covered, the child must be enrolled (or re-enrolled) on a special enrollment application each year **prior to December 1**. To be eligible, the dependent must meet all of the following qualifications:

"Dependent, unmarried children to age 25 will be covered under the family plan. Such children to be eligible must be unmarried, legally residing with, and dependent on the employee for more than half their support as defined by the Internal Revenue Code of the United States, and must either qualify in the current year for dependency tax status or have been reported as a dependent on the employee's most recent federal income tax return."



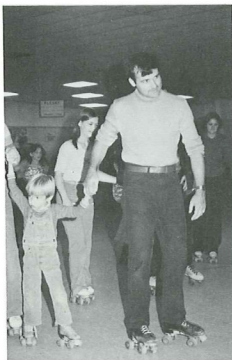
PUZZLE CORNER . . . Betty is twice as old as Camille was when Betty was half as old as Camille will be when Camille is three times as old as Betty was when Betty was three times as old as Camille. Their combined age is 44. How old is Betty?

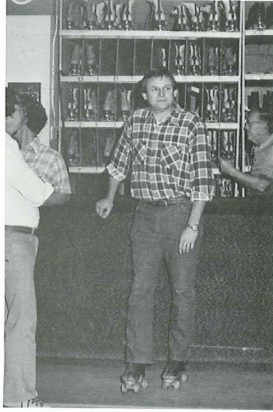
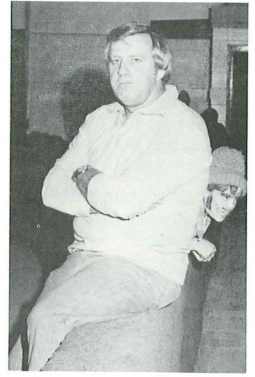
Solution to last week's puzzle: 3:42

WITCHES, GOBLINS, AND ROLLER SKATES

Halloweening the WFI Way...

(Thanks to Engineering's Monte Visser for the following photo story of our Athletic Association's family costume roller skating party held October 27.)





"IT'S A SMALL WORLD"

provided the theme for the Julianna Club's annual scholarship fund-raiser held early in October.

In addition to the usual good fun and the many prizes, members and their guests were treated to a show featuring fashions from around the world.

General Chairman of the event — Patsy Becher — extends her thanks to all chairmen and their committees for a job well done!

