

the Wheelagram



Materials Cleaning Systems Division
Wheelabrator-Frye Inc.

VOL. V NO. 20

OCTOBER 9, 1981

THE UNITED WAY . . .

United Way committee members from three Mishawaka companies are sharing ideas and uniting in a common goal — to ensure the success of the 1981 United Way campaign. Dodge Division of Reliance Electric Company, Uniroyal, Inc., and Wheelabrator-Frye are all working to meet this year's campaign goal.



Donna Larko (seated left), Employment Manager, Uniroyal; **Sophie Kinney**, (center) Wheelabrator Inspector; **Patricia Erick**, (seated right) Dodge Secretary; (standing l to r) **Chester Leda**, Uniroyal; WFI Personnel Manager **Karl Zimmer** and **Terry Wentworth**, Dodge, Inspector Quality Control recently met with **Jeff Hums**. Jeff represented the Blue Jays — one of the many agencies which are helped by our contributions to United Way.

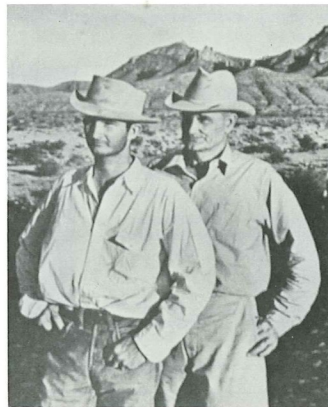
Let's all lend a helping hand again this year — it's our contribution that makes it work!

Credit Union Members — For Your Information:

Beginning October 1, 1981 the Credit Union office will be offering "All Savers Certificates" (tax free earnings up to \$2000), at the current applicable interest rate.

On January 1, 1982 the Credit Union will have available your own personal Individual Retirement Account — IRA — which gives you a deduction on your tax return for the allowable amount of savings.

For further information contact the Credit Union office, ext. 266.



FATHER AND SON IN WEST TEXAS by Alfred Eisenstaedt

WHEELABRATOR BRINGS LIFE PHOTO EXHIBIT TO COMMUNITY . . .

Wheelabrator employees and their families will be treated to a preview of *Life — The First Decade* at Notre Dame's Snite Museum Saturday, October 17, 7:00 til 9:00 p.m.

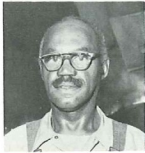
The nationally acclaimed exhibition of original photographic prints has been selected from *Life Magazine's* resource of more than 18 million prints. The exhibit will open to the public on Sunday, October 18 and will be on display through December 28.

Alfred Eisenstaedt, internationally acclaimed photographer and winner of several awards for his candid photos in early issues of *Life* magazine, will give a public address at a film-talk program at 4:00 p.m. Thursday, October 15 in the Snite Museum's Annenberg Auditorium.

The display of photos, sponsored by our company, includes many of Eisenstaedt's best remembered pictures of Germany in the 1930's and of World War II America, as well as photos taken by other famous photographers. Nearly one-third of the exhibit provides a graphic description of a world engaged in war. Portraits show Roosevelt, Churchill, deGaulle, Stalin and Hitler in exceptional studies.

This is an exciting collection of photographs — for many of us, memory-stirring! We hope all employees and their families will take advantage of this company-sponsored exhibit. See you at the Snite Museum — Saturday, October 17!

QUALITY PERFORMANCES RECOGNIZED . . .



Plant 2 Melters — **Bretho Danzy** (l) and **Danny Vincent** (r) — were named “Melter of the Month” for the months of May and June respectively. In each case, these men earned the most points, based on established criteria, to be cited for their quality performances. Congratulations Bretho and Danny!

NEW ASSIGNMENTS . . .

Congratulations to:

Judy Sawyer
Marketing
Information
Specialist



Vicki Stringer
Senior Purchasing
Clerk



Dick Zelmer
Superintendent-
Foundry



Not on camera — **Anne Claeys** promoted to Secretary-Purchasing.

SERVICE ANNIVERSARIES . . .



Lloyd McCullough
Machine Repair-
man-Maintenance
Plant 1
30 Yrs. (Aug. 27)



Larry Arndt
Lab Technician-
Process & Product
Development
25 Yrs. (Aug. 23)



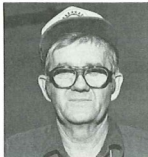
Kenny Bidlack
Carpenter-
Maintenance
Plant 1
40 Yrs. (Sept. 9)



Bill Smith
Cost Accountant-
Accounting
30 Yrs. (Sept. 17)



Dan White
Process Control
Operator-Plant 2
30 Yrs. (Sept. 18)



Jewel Bradberry
Assembler “A”-
Assembly
30 Yrs. (Sept. 24)



Corwin Kiser
Carpenter-North
Shipping
25 Yrs. (Sept. 5)



William Roe
Light Assembler-
Balcrank Assembly
25 Yrs. (Sept. 14)

Marking 15 years of company service in September were: **Jerry Pratt**, Spray Painter-North Shipping (September 12); **Pat Woodruff**, Outside Order Filler-Material Handling (September 14); **Ted Bierwagen**, Millwright-Plant 1 Maintenance (September 19); **Bernard Rzepnicki**, Sweeper-Laborer, Foundry (September 26); **Alma Bloomquist**, Shop Lift Truck-Machine Shop (September 26); **Donald Ward**, Arc Welder-Steel Fabrication (September 26).

NEW FACES . . . Welcome to:



David Eggleston
Project Manager-
Engineering



Alan Frutchey
Assistant
Credit Manager



William Gatzulis
Purchasing
Manager



Elaine Hess
Data Entry
Operator-MIS



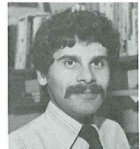
Vicki Kincaid
Accounting Clerk



Vicki Rowland
Computer
Operator-MIS



Vernon Satchwell
Senior Industrial
Engineer



Elio Tiseo
Engineer-Process
& Product
Development

WE MUST HELP MAKE IT HAPPEN!

We can join the Wheelabrator fair share team — and receive a fair share pin — just by increasing our pledges to the United Way 50¢ per week.



United Way
of St. Joseph County, Inc.